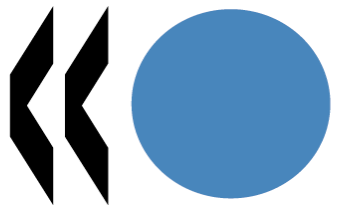


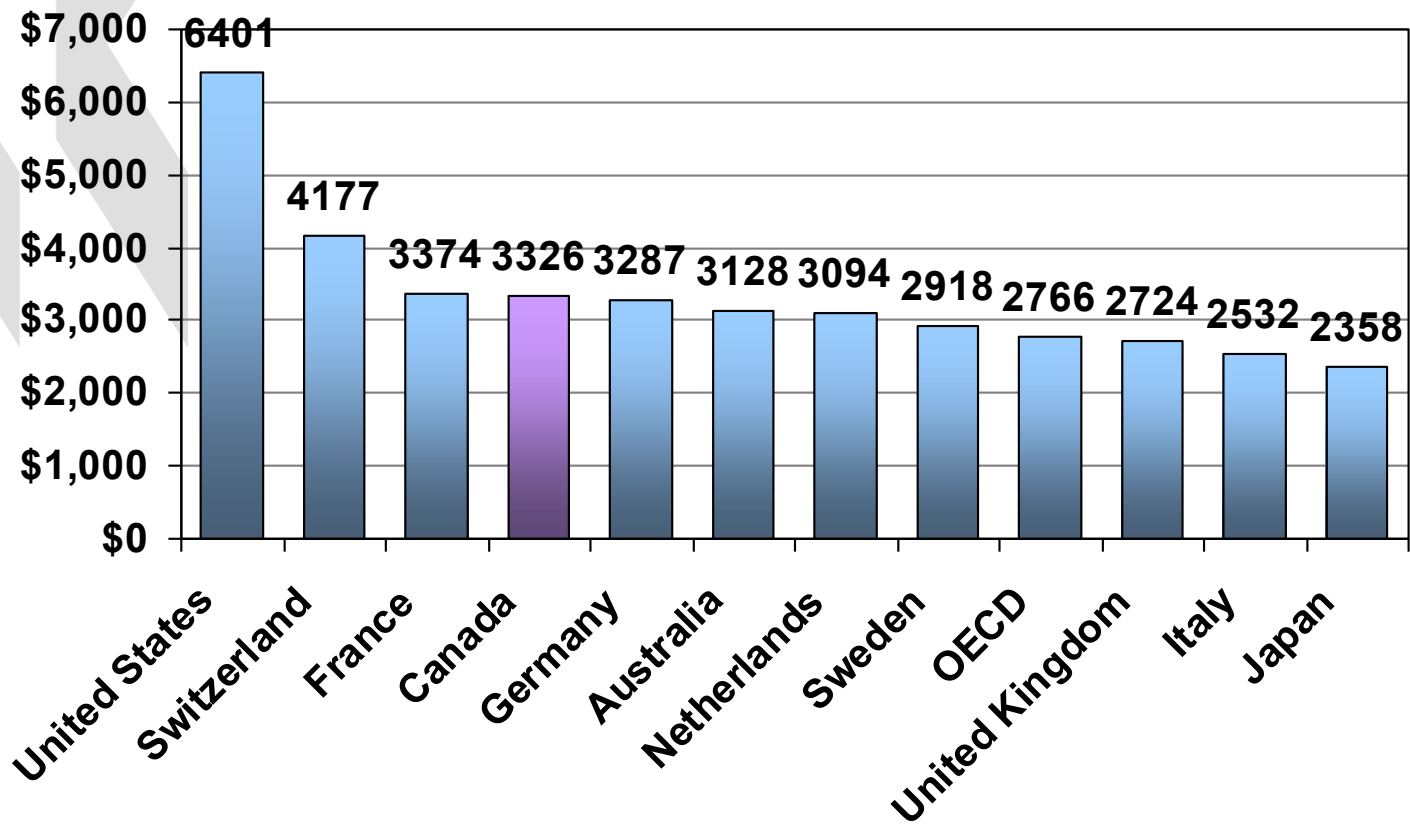
OECD  OCDE

# Canadian Health System Performance in an International Context

---

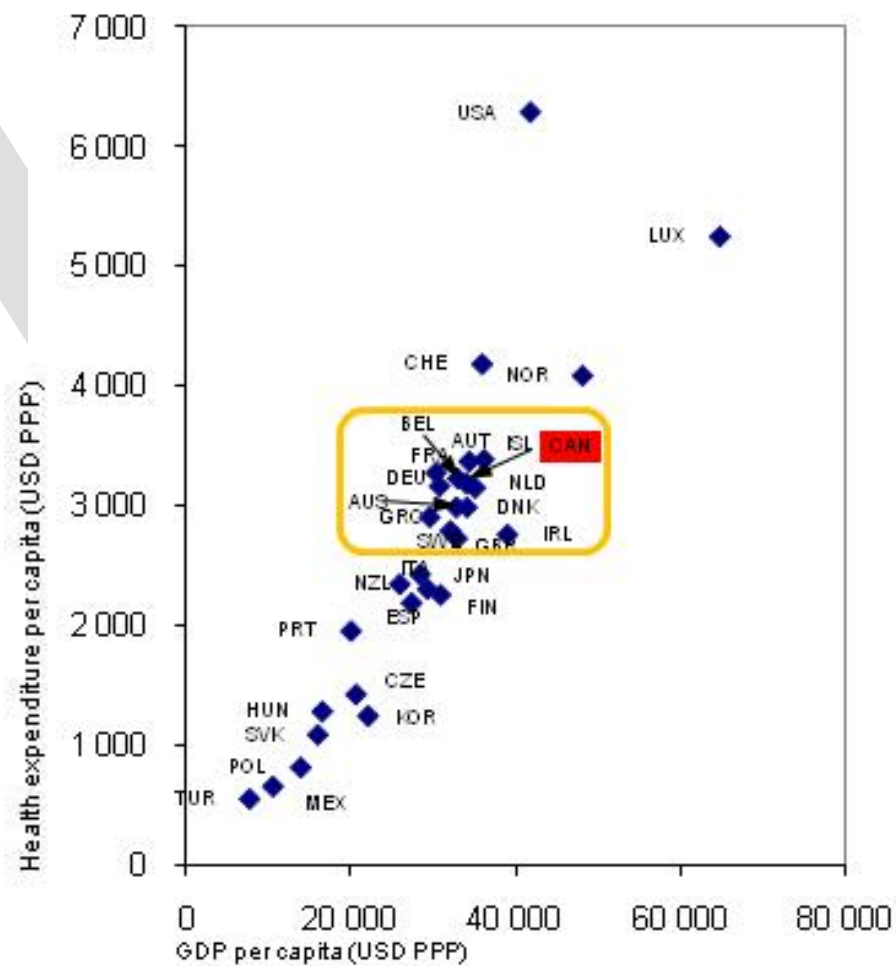
Peter Scherer  
Head  
OECD Health Division

## Per capita spending on health (US\$ PPP) in 2005

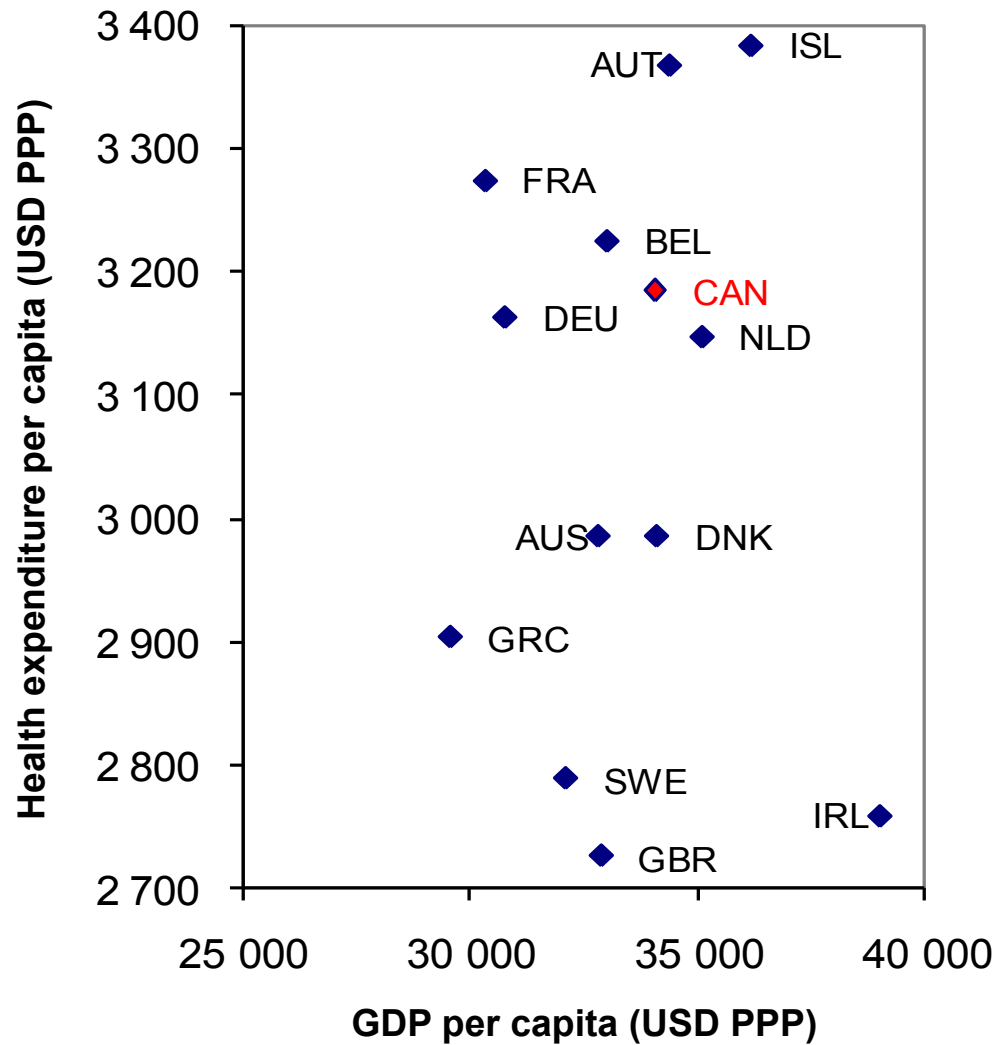


Source: *OECD Health Data 2007*

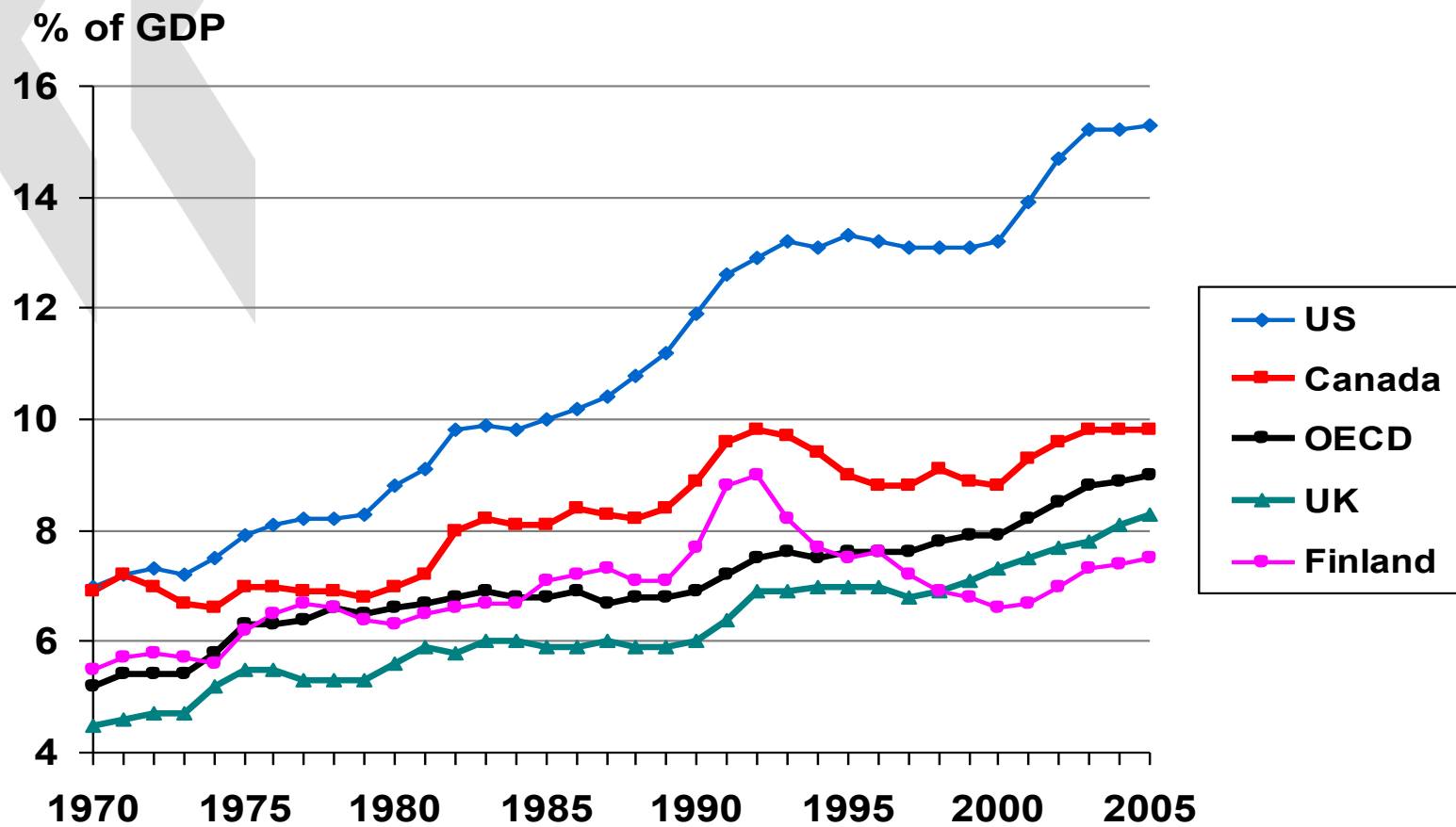
# Health expenditure per capita and GDP per capita, 2005



# Health expenditure per capita and GDP per capita, 2005

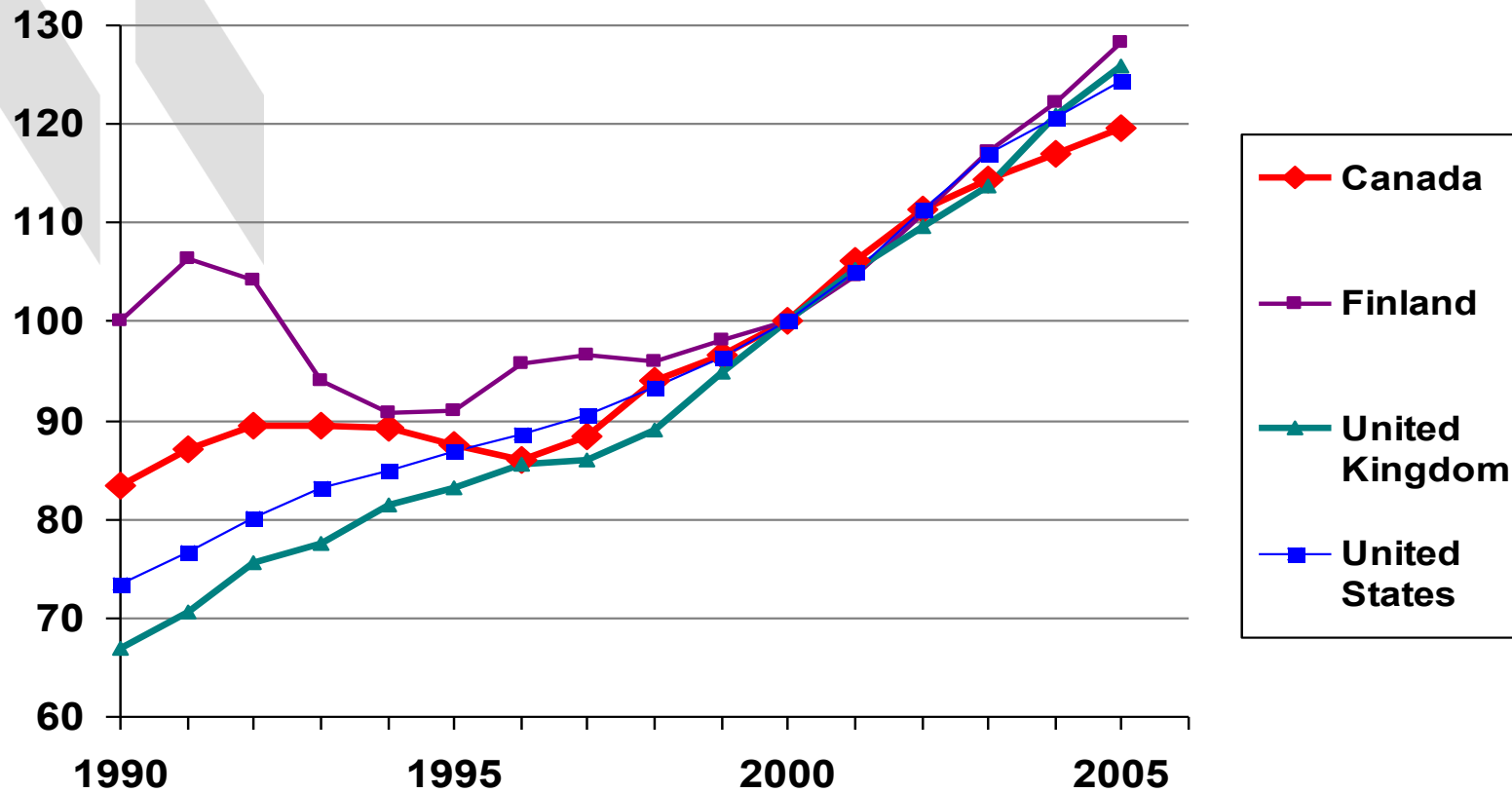


# Health spending as a share of GDP, 1970-2005



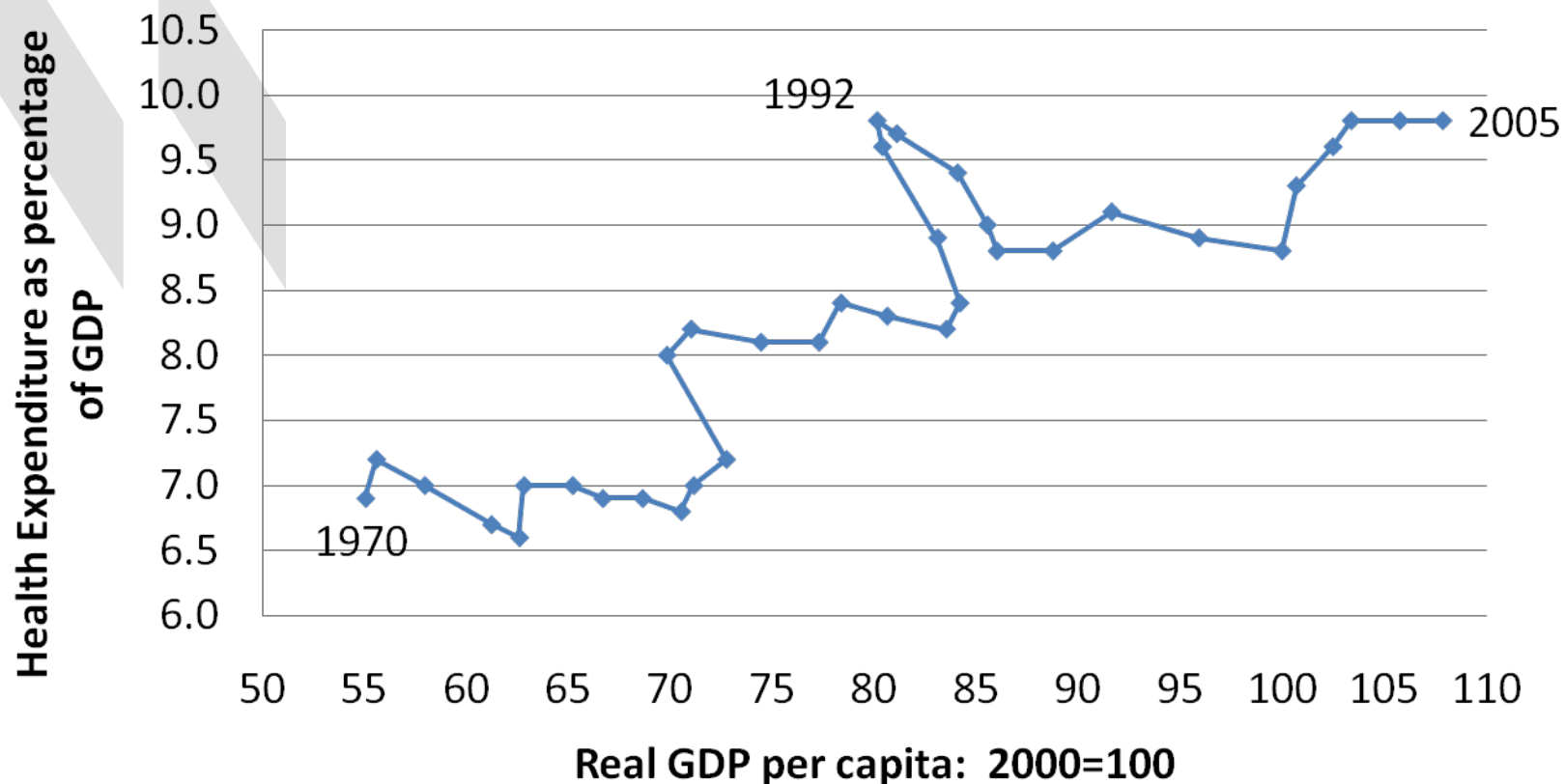
Source: *OECD Health Data 2007*

## Real Per Capita Health spending, 1990-2005 2000=100

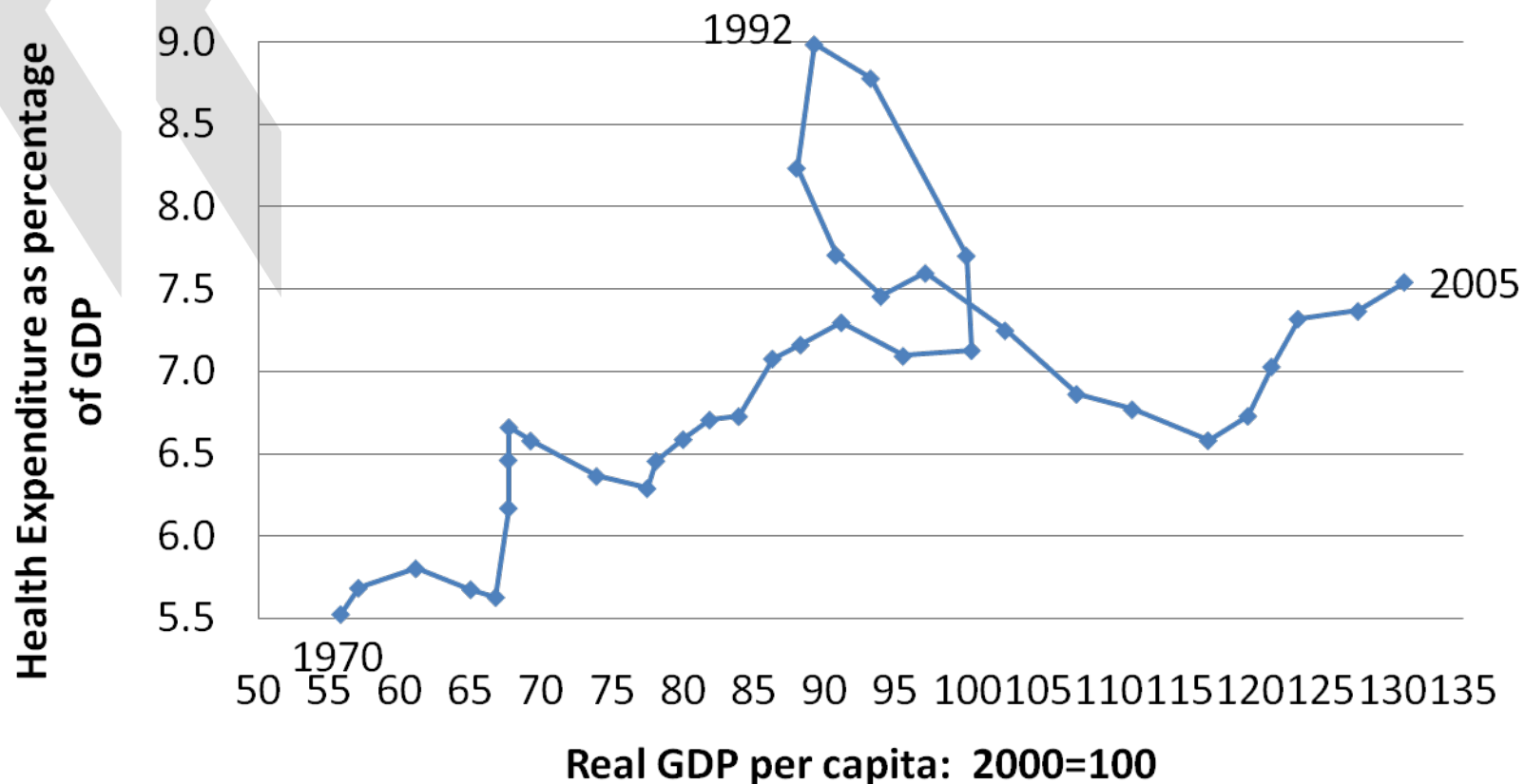


Source: *OECD Health Data 2007*

# GDP and Health Expenditure Share over time, Canada, 1970-2006

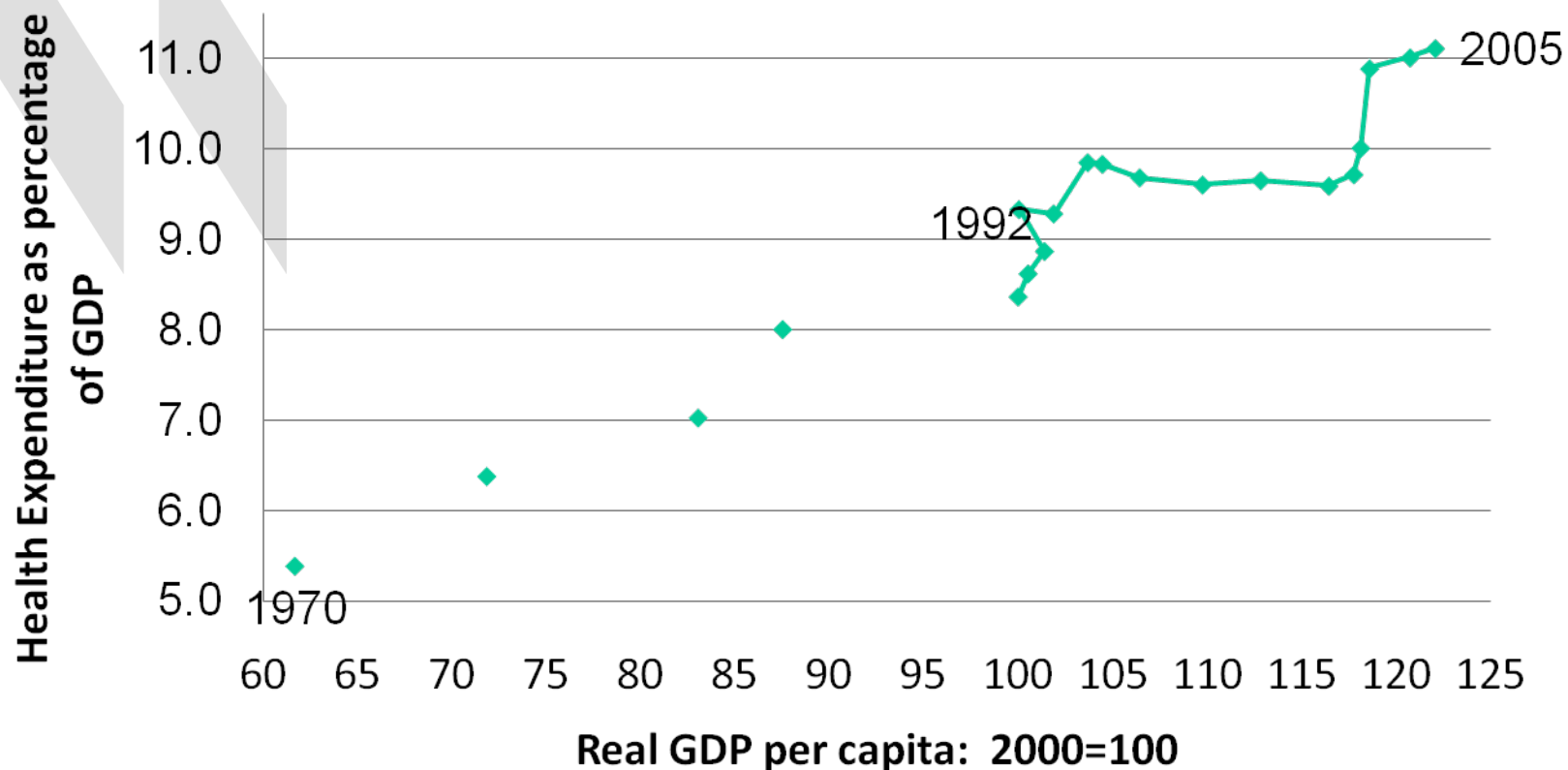


# GDP and Health Expenditure Share over time, Finland, 1970-2006

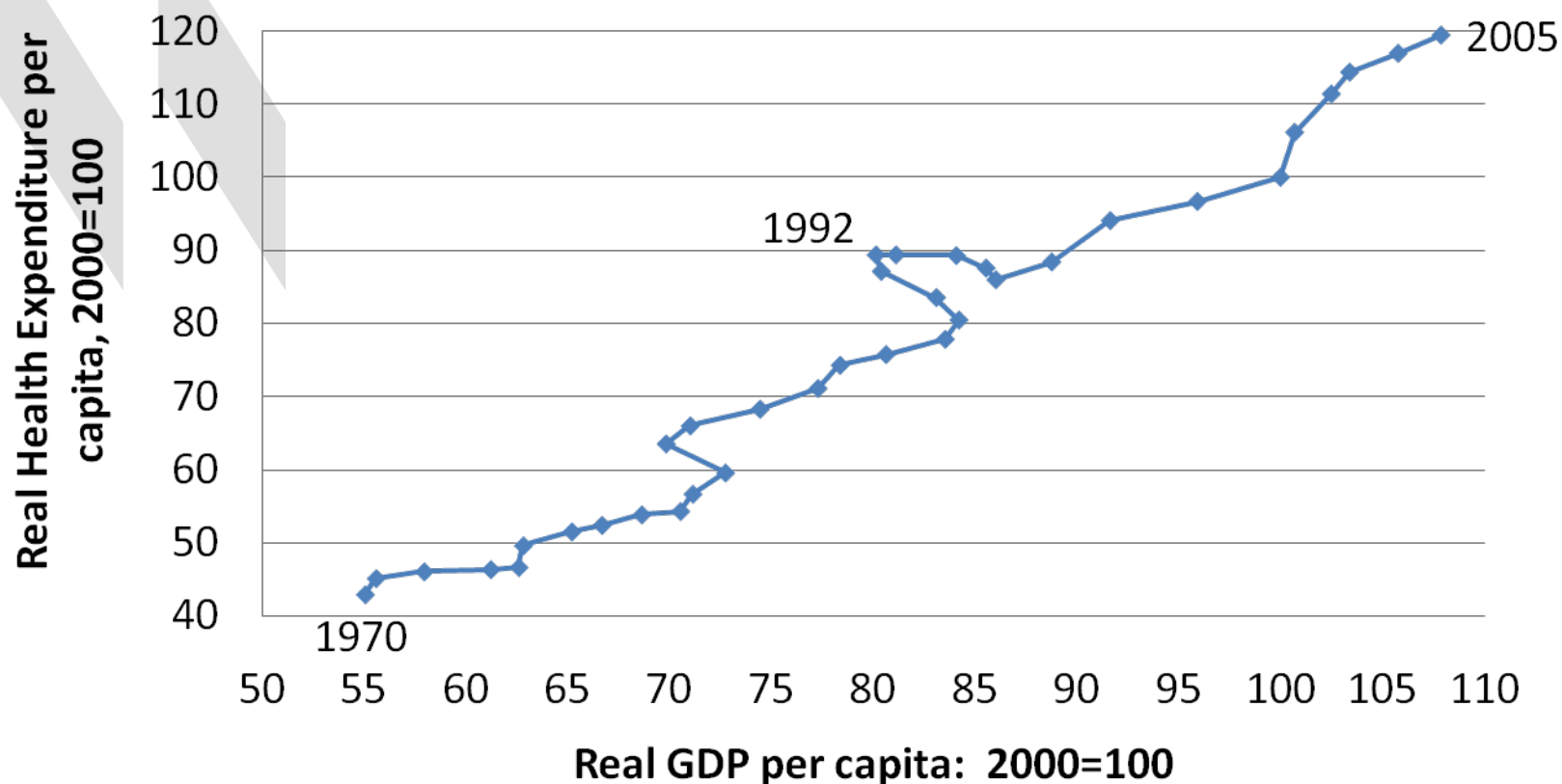




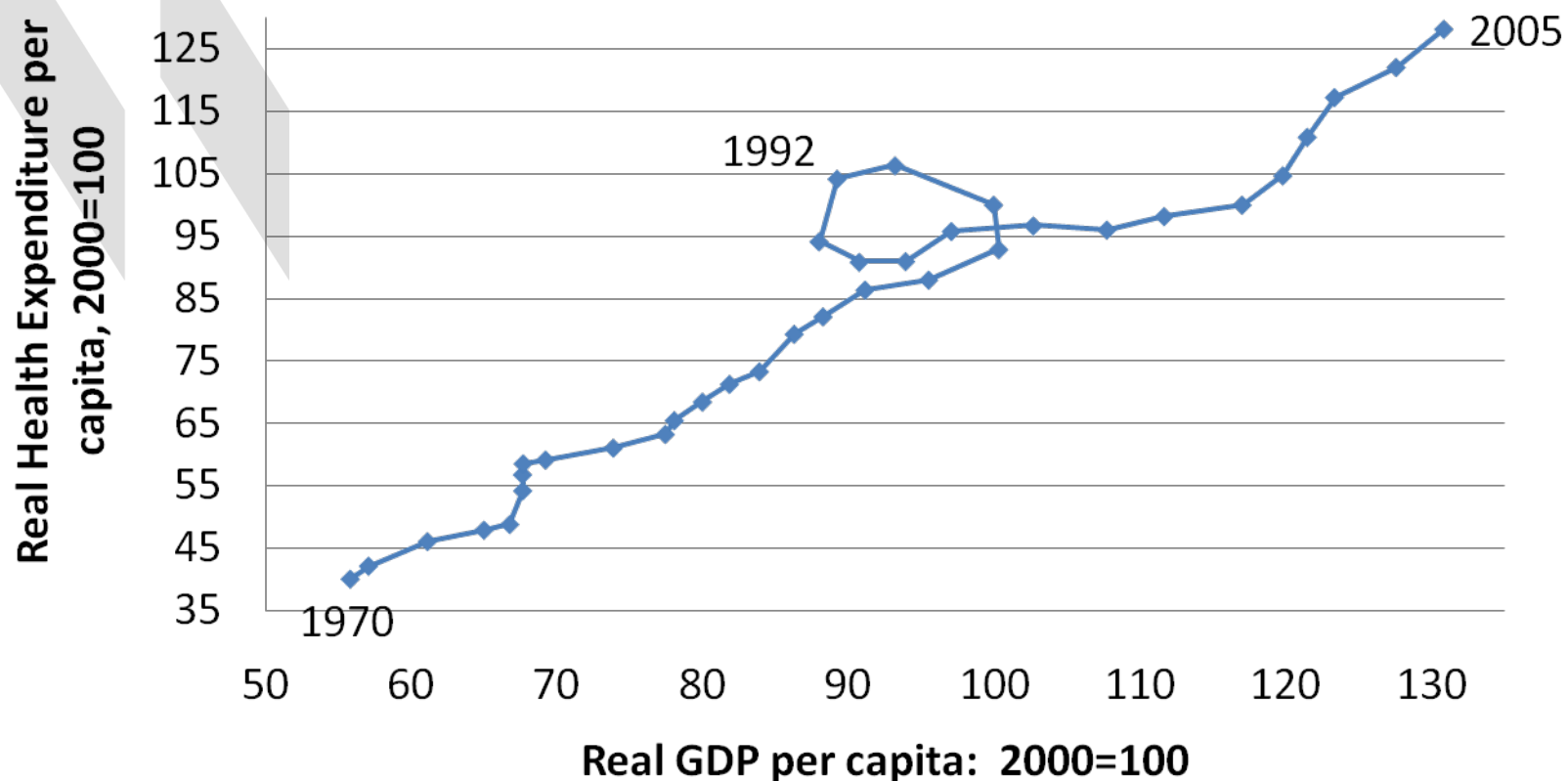
# GDP and Health Expenditure Share over time, France, 1970-2006



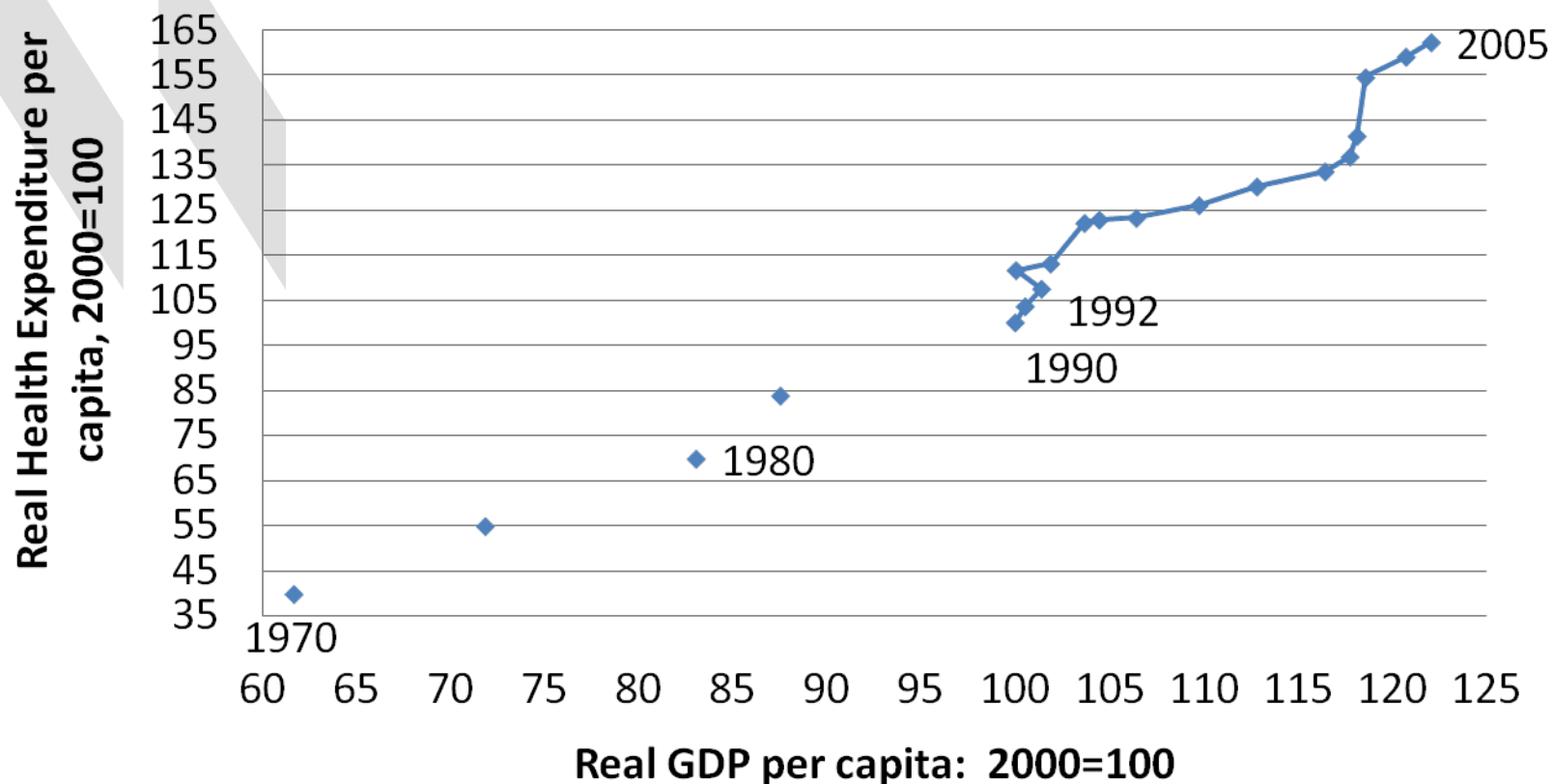
# Real GDP and Health Expenditure over time, Canada, 1970-2006



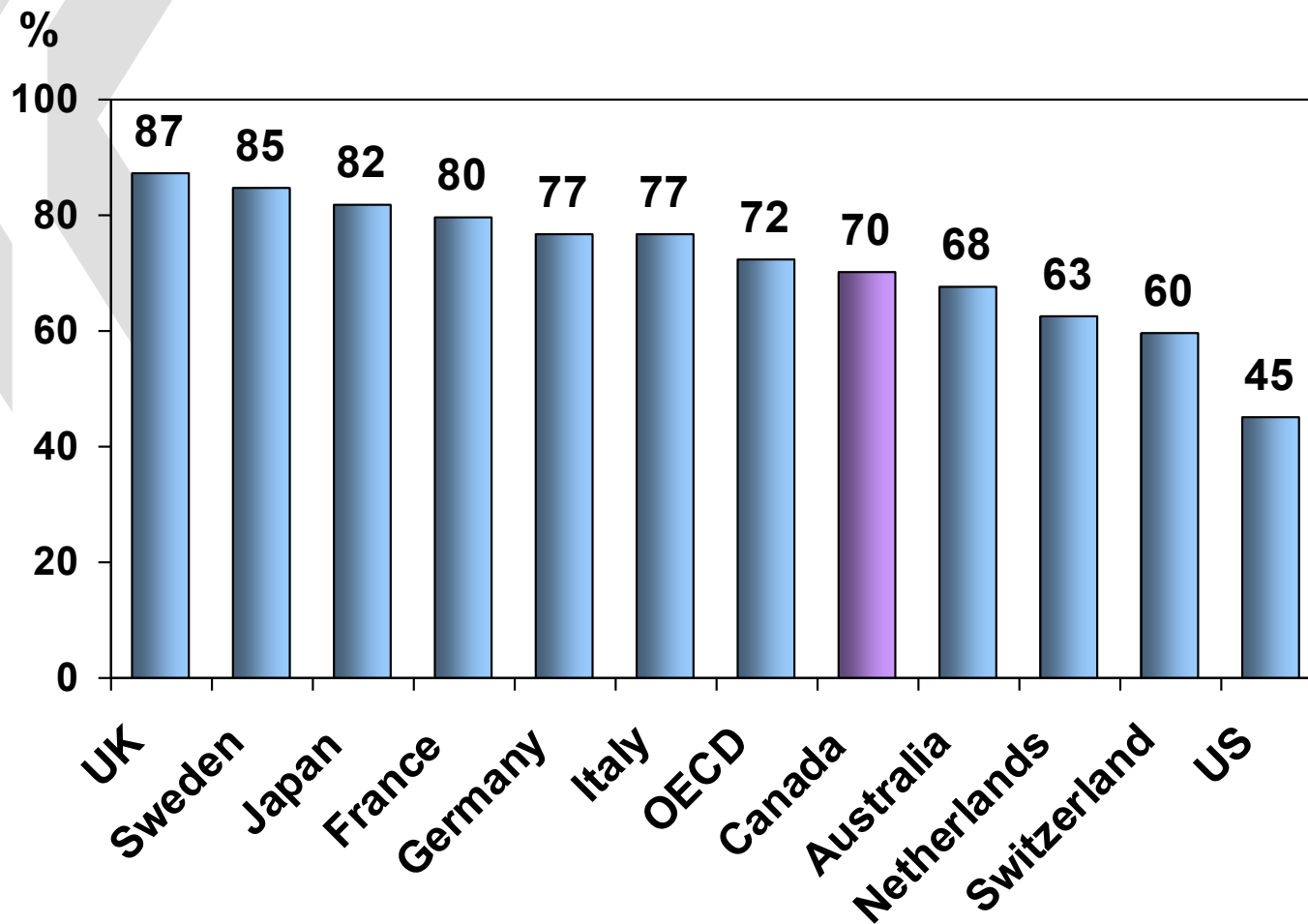
# Real GDP and Health Expenditure over time, Finland, 1970-2006



# Real GDP and Health Expenditure over time, France, 1970-2006



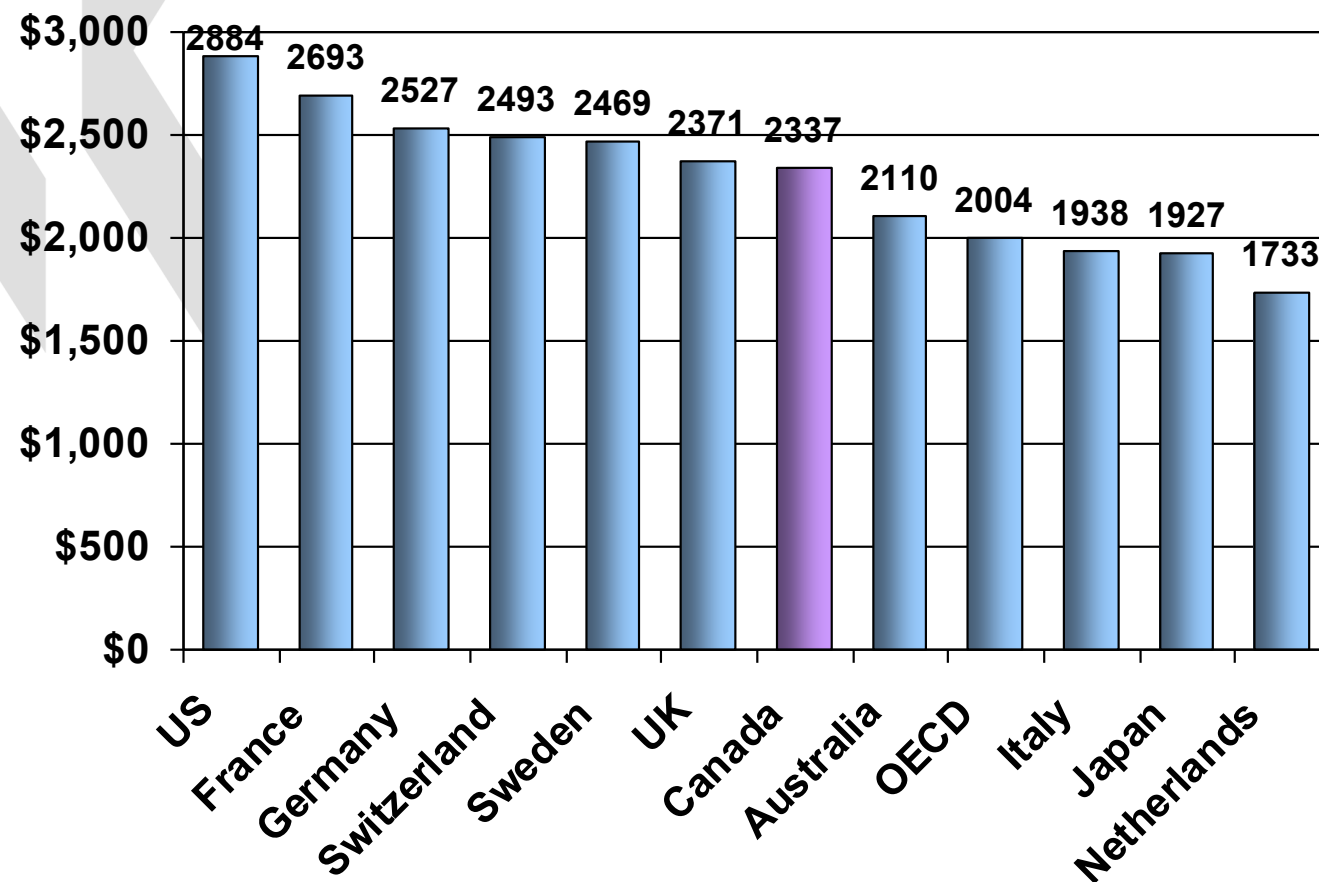
# Public share of total health spending, 2005



Source: *OECD Health Data 2007*

# Per capita public spending on health, 2005

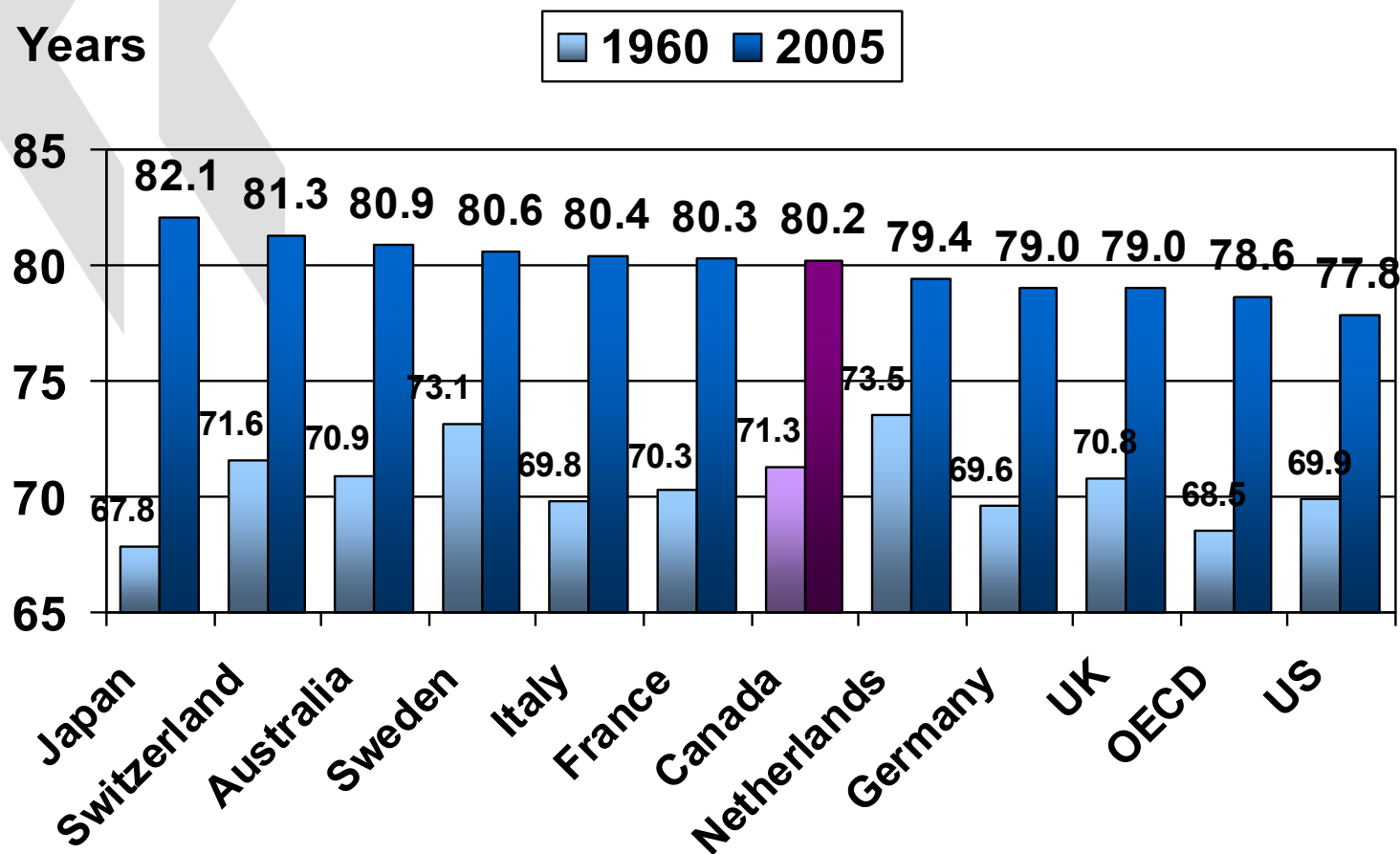
Per capita, US\$ PPP



Source: *OECD Health Data 2007*

# Improvements in health status (1)

## Life expectancy at birth

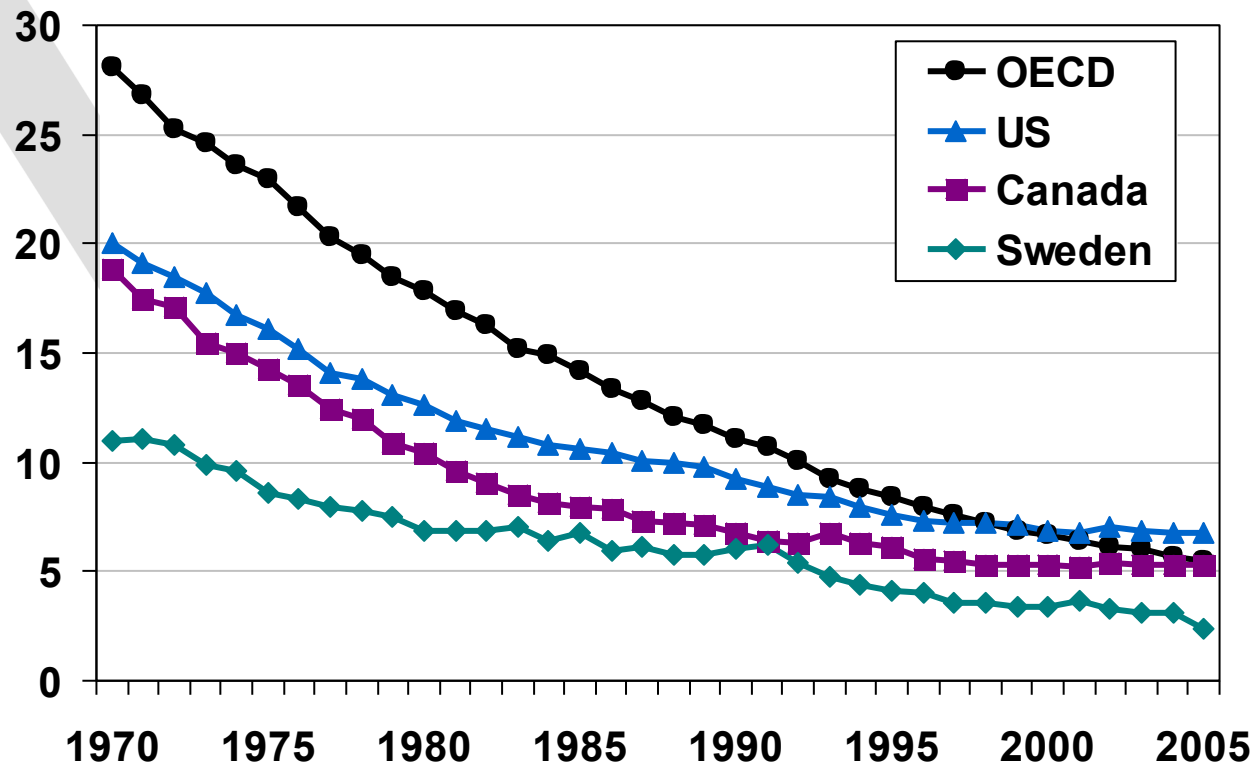


Source: *OECD Health Data 2007*

# Improvements in health status (2)

## Infant mortality, 1970-2005

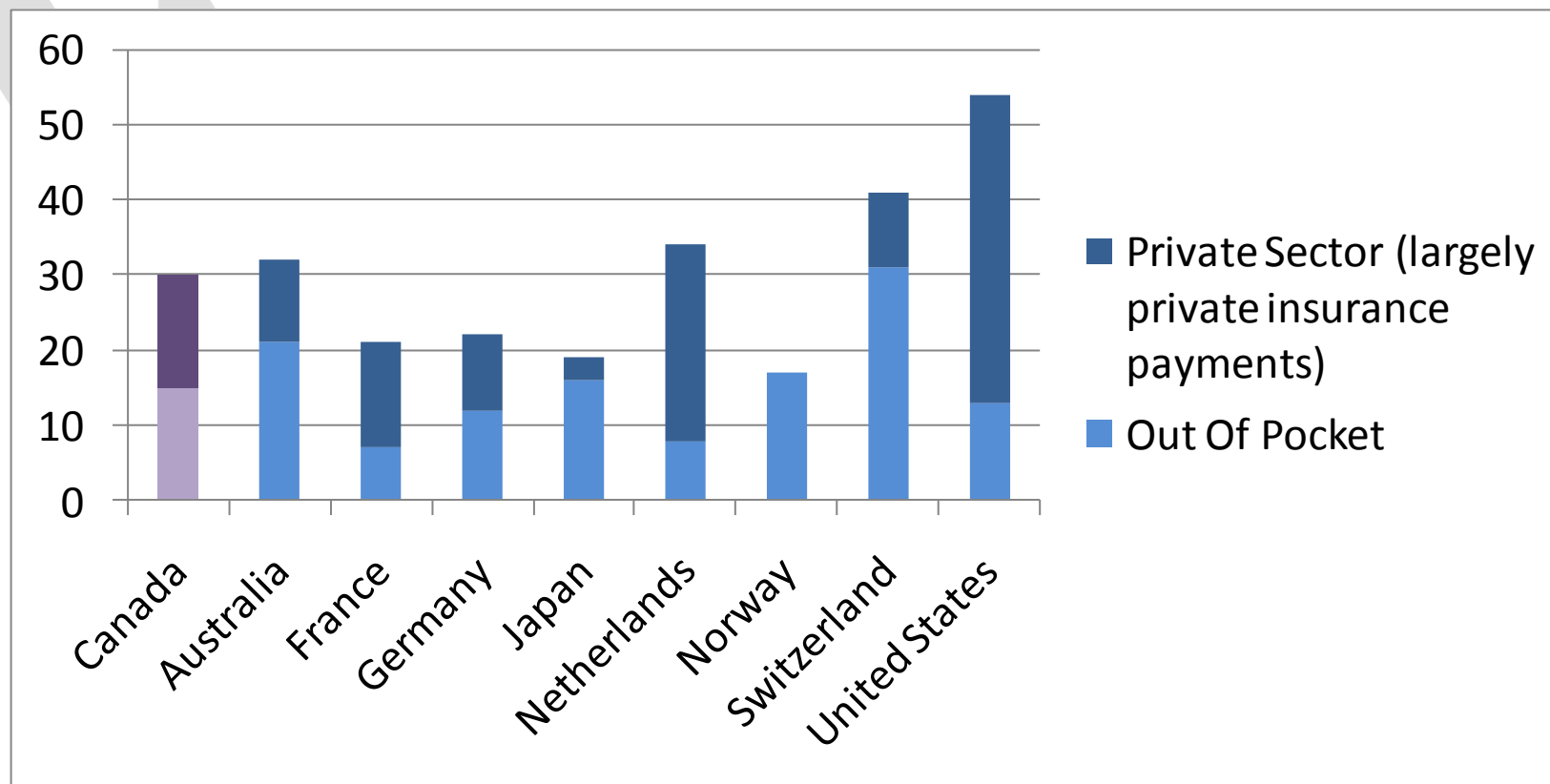
Deaths per 1000 live births



Source: *OECD Health Data 2007*



## Private Sector and Out Of Pocket Expenditure as a Percentage of Total Current Health Expenditure, 2005

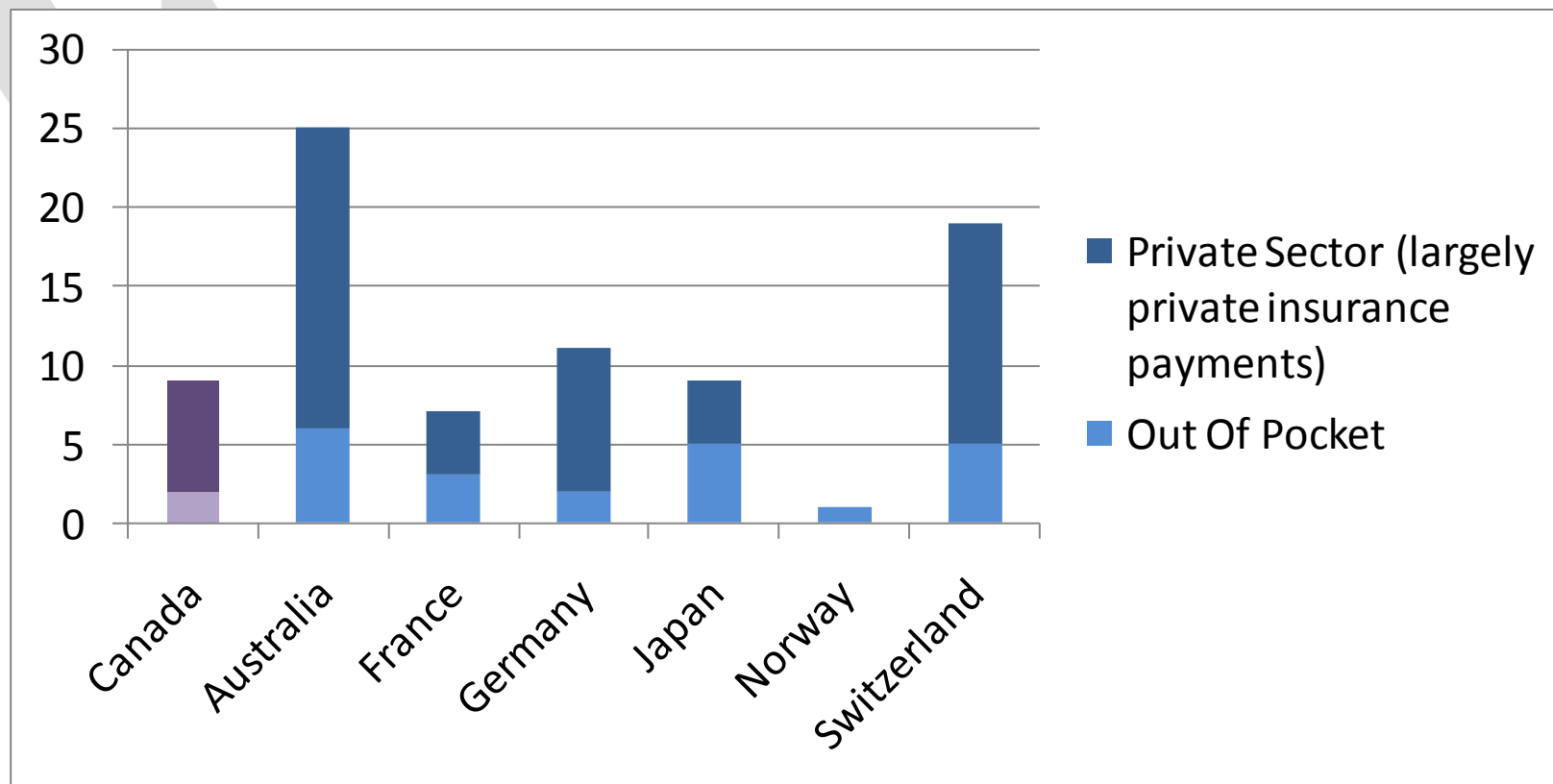


## Voluntary Insurance is a significant source of financing in only a small share of OECD countries

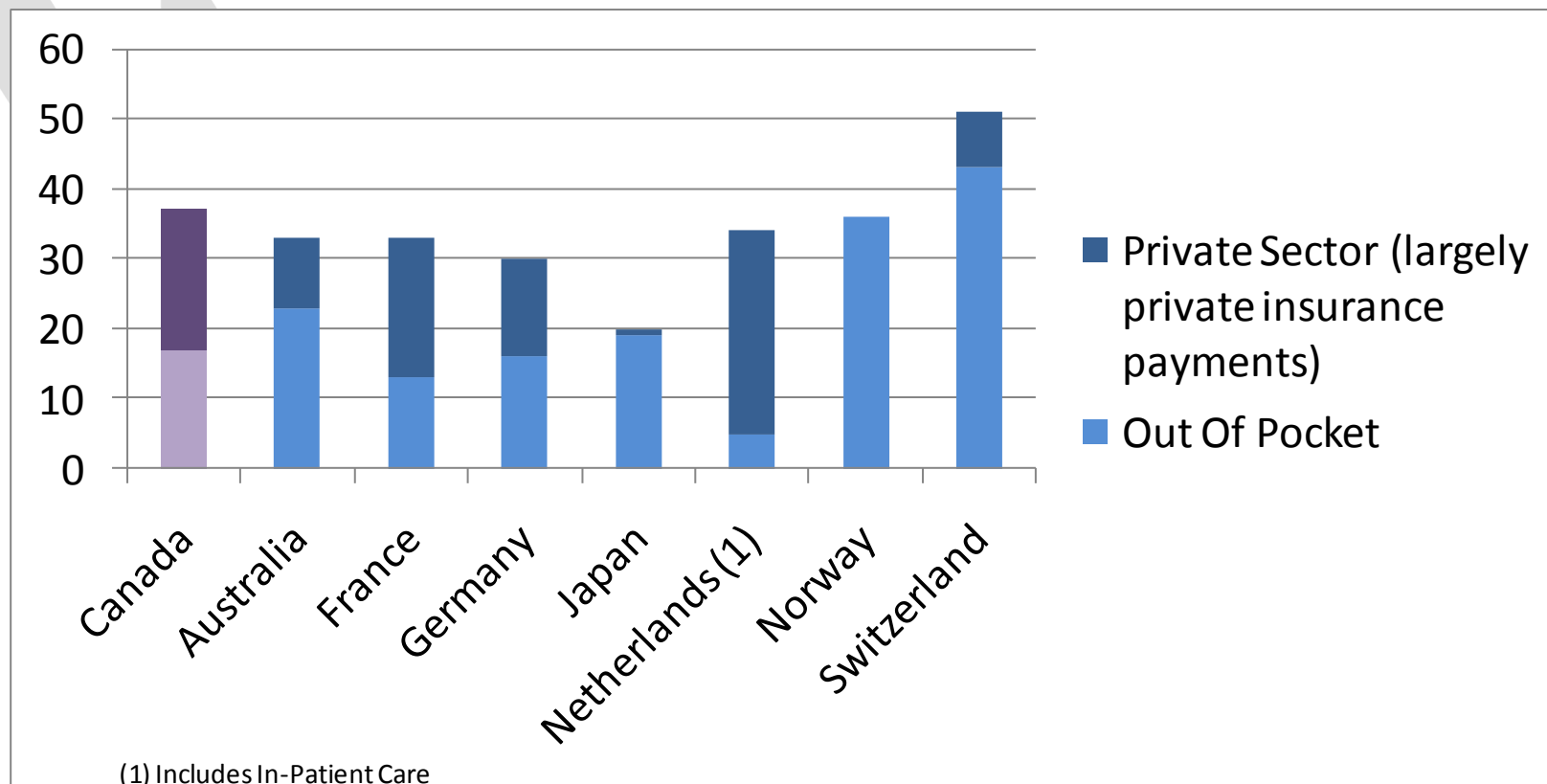
<i>Year 2000</i>	<i>% in total health exp.</i>	<i>% Population covered</i>	<i>Main function</i>
<b>OECD average</b>	<b>6.3</b> ▪ > 10% (5 countries) ▪ < 2% (14 countries)	<b>30</b> ▪ > 30 (10 countries) ▪ Negligible in as many	
USA	35.1	72	Primary
Netherlands(1)	15.2	28/64	Primary/Suppl.
France	12.7	92	Compl.
Germany	12.6	18	Primary/Suppl
Canada	11.4	65	Suppl.
Ireland	7.6	44	Duplic.
Australia	7.3	45	Duplic.
Austria	7.2	32	Suppl.

Source: OECD 2004, *Private Health Insurance in OECD Countries*.

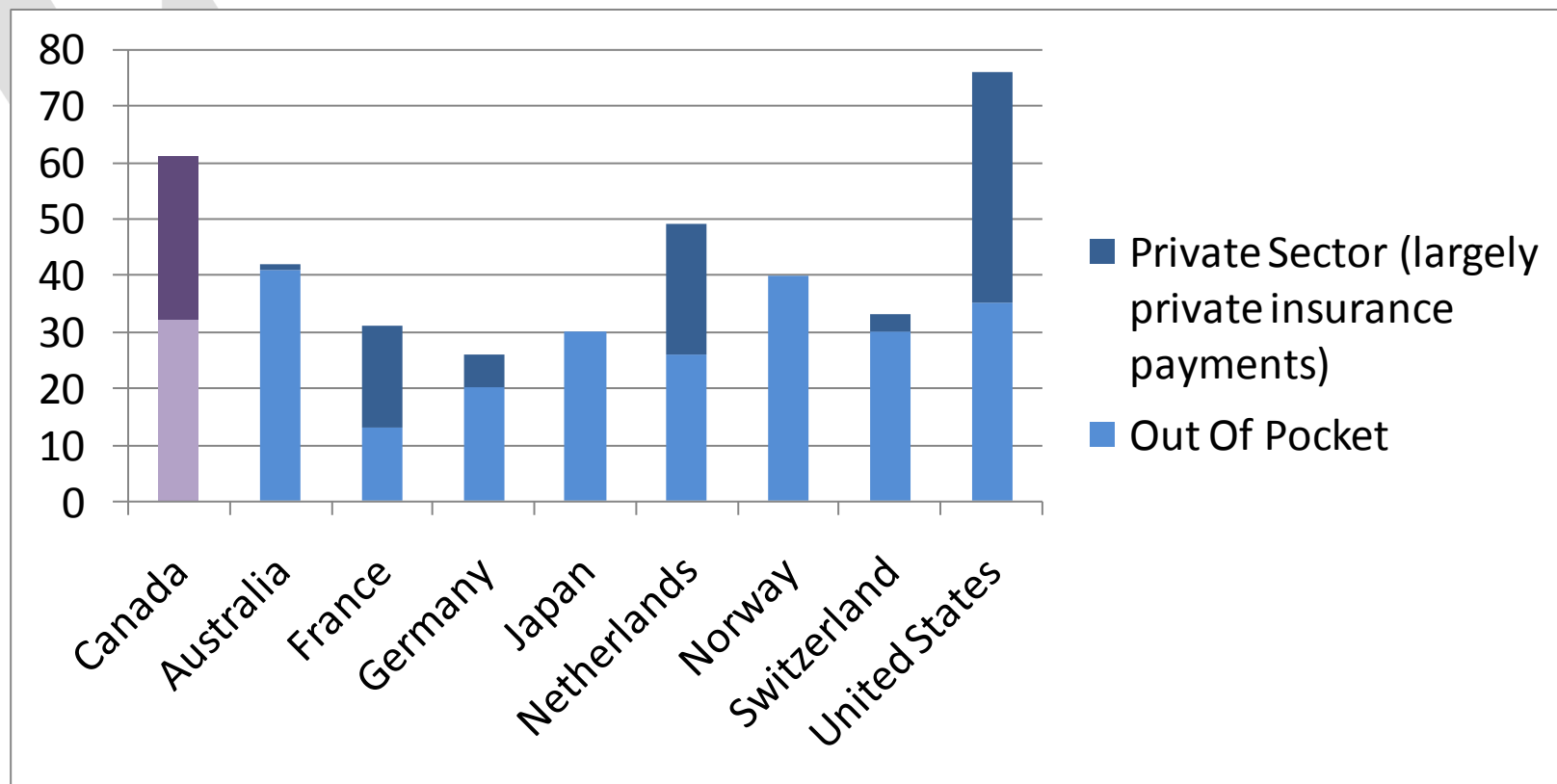
## Private Sector and Out Of Pocket Expenditure as a Percentage of Expenditure on In-Patient Care, 2005



## Private Sector and Out Of Pocket Expenditure as a Percentage of Ambulatory Care Expenditure, 2005



## Private Sector and Out Of Pocket Expenditure as a Percentage of Pharmaceutical Expenditure, 2005



# OECD Health Care Quality Indicators Project

## Examples of initial list of indicators

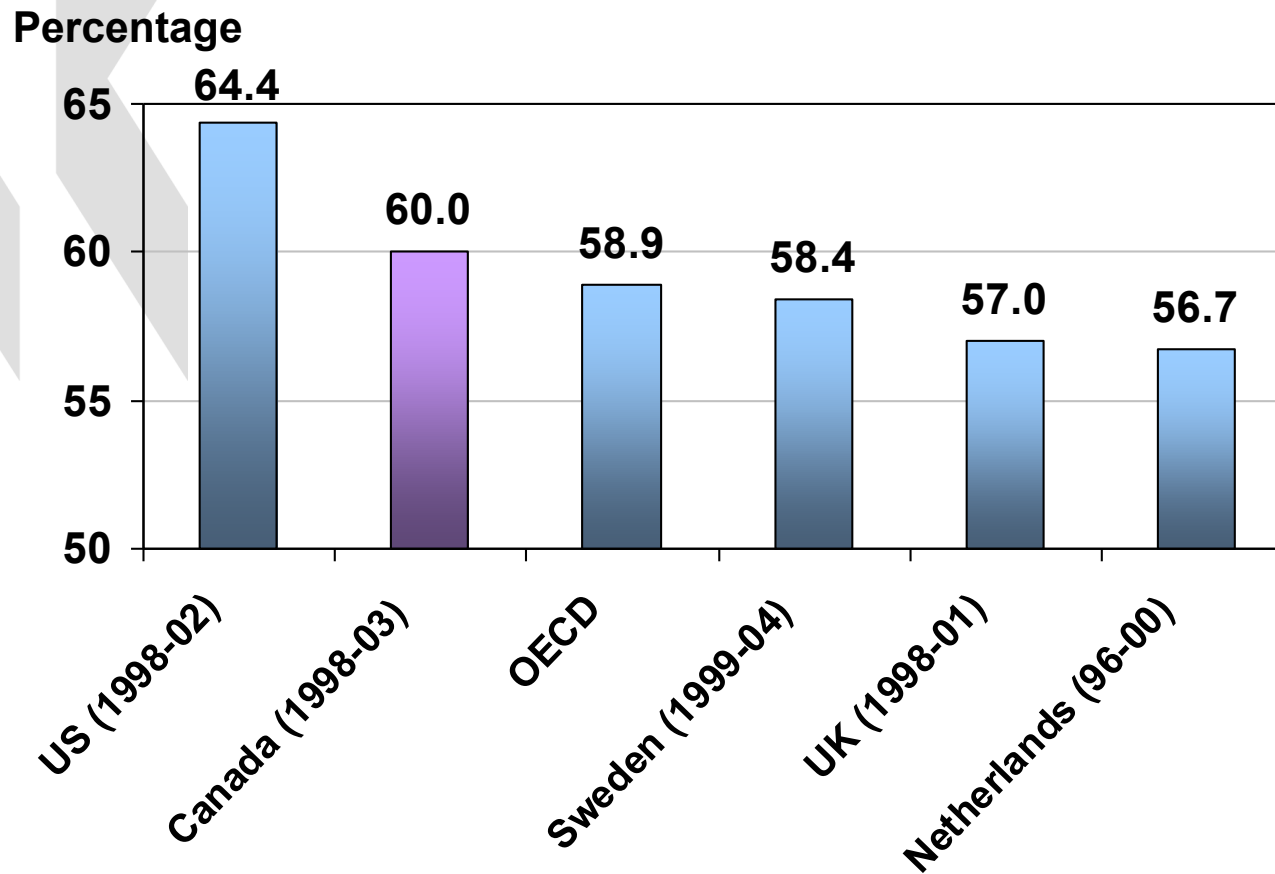
### Good Process

- Vaccination rates against infectious diseases (children, elderly)
- Screening rates for cancers
- Diabetes prevention (rates of retinal exams)

### Good/Bad Outcomes

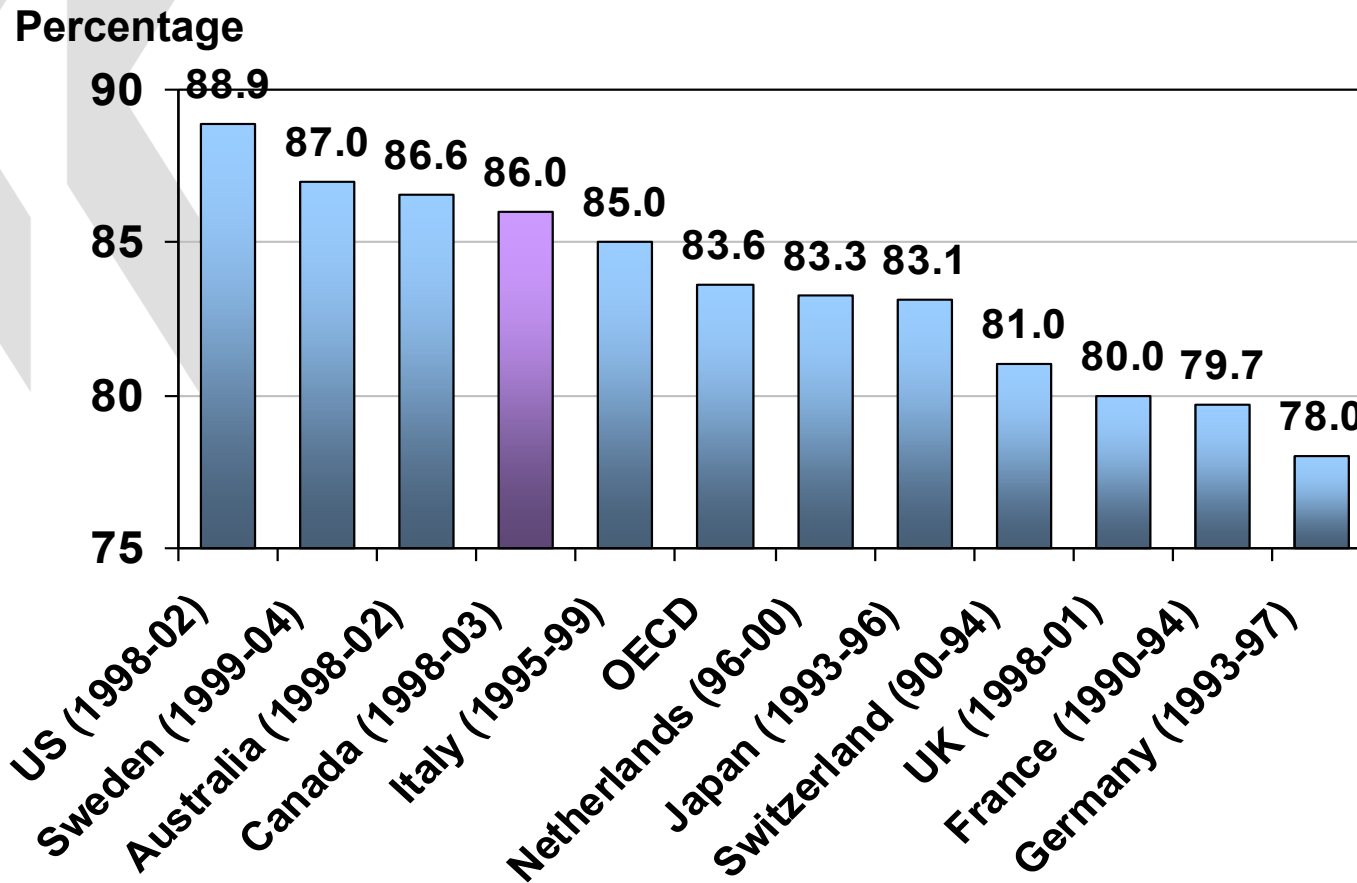
- Disease incidence (measles, influenza)
- **Survival rates from cancers**
- 30-day mortality following heart attack or stroke

## Colorectal cancer, five-year relative survival rates



Source: *Health at Glance 2007 - OECD indicators*

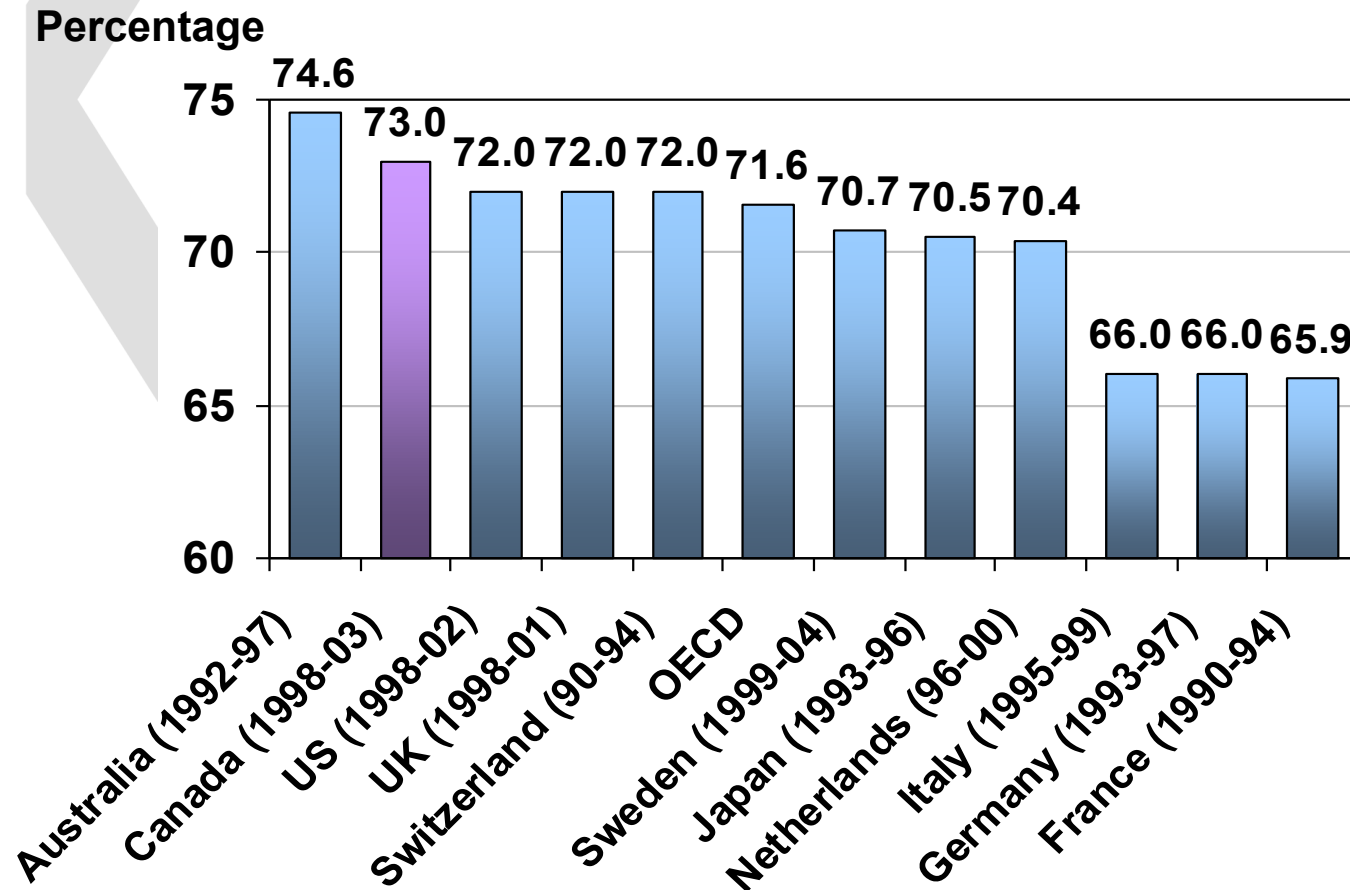
## Breast cancer, five-year relative survival rates



Source: *Health at a Glance 2007 – OECD indicators.*



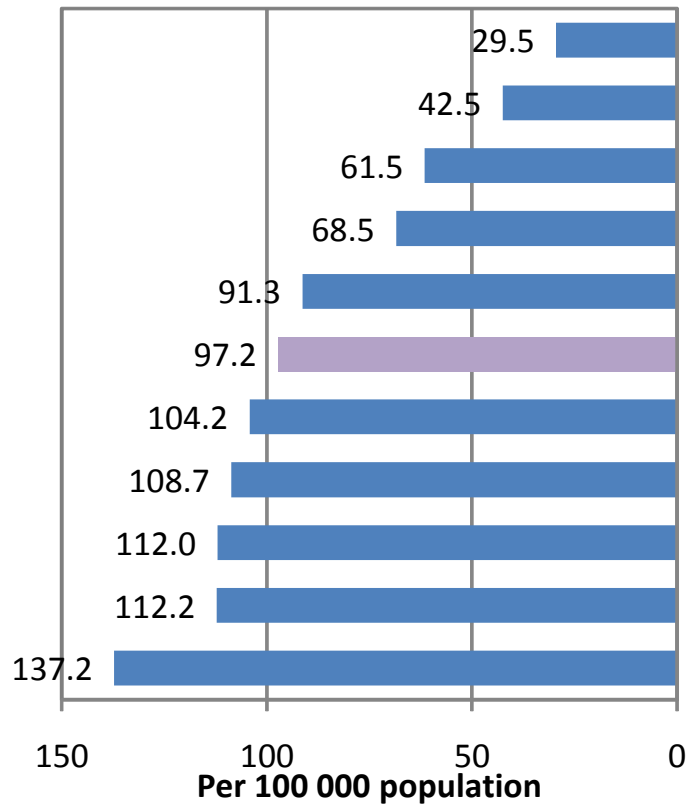
## Cervical cancer, five-year relative survival rates



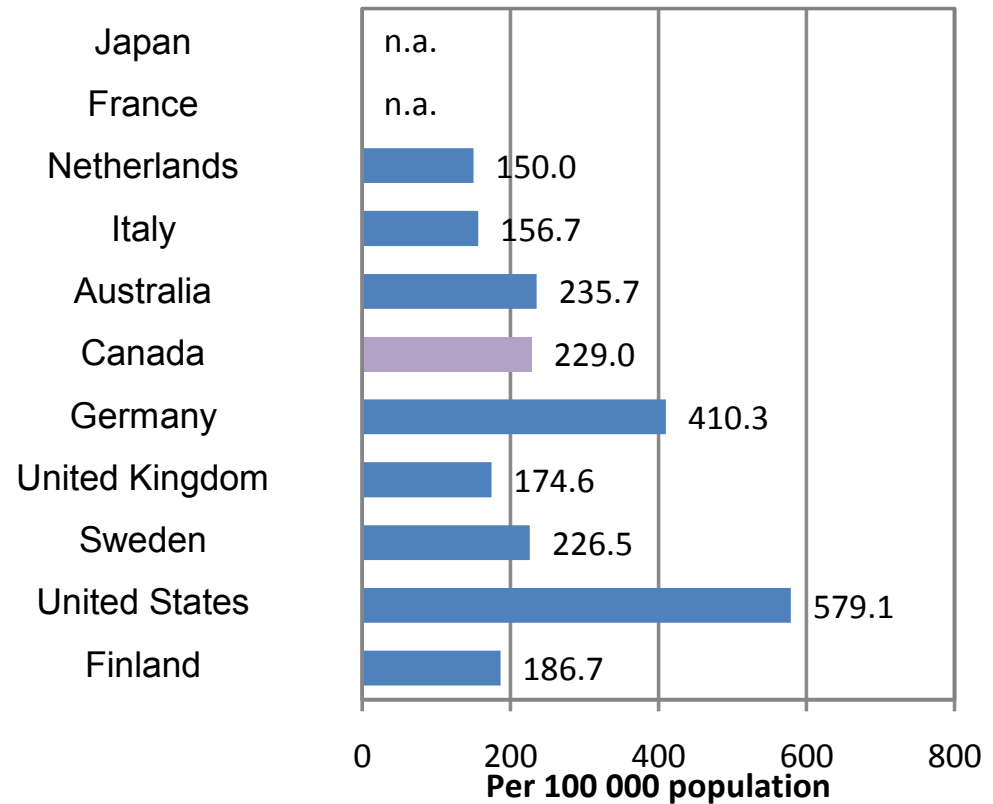
Source: *Health at a Glance 2007 – OECD indicators*

# Discrepancy between heart disease incidence and treatment rates

Ischaemic heart disease, total population, age standardised mortality rate, 2005



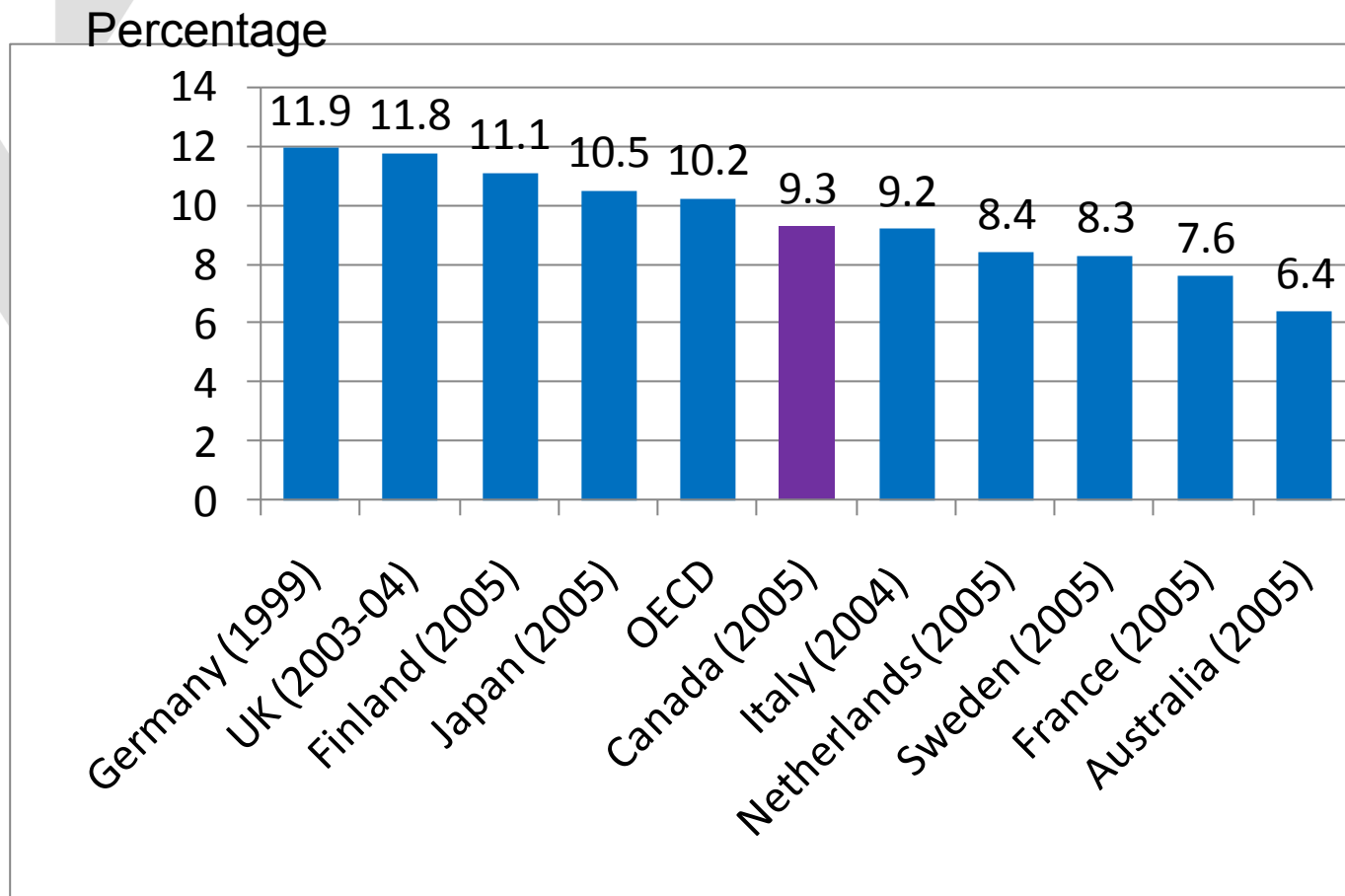
Coronary re-vascularisation procedures\*, per 100 000 population, 2005



\* Coronary artery bypass grafts (CABG) and Percutaneous coronary interventions (PTCA).

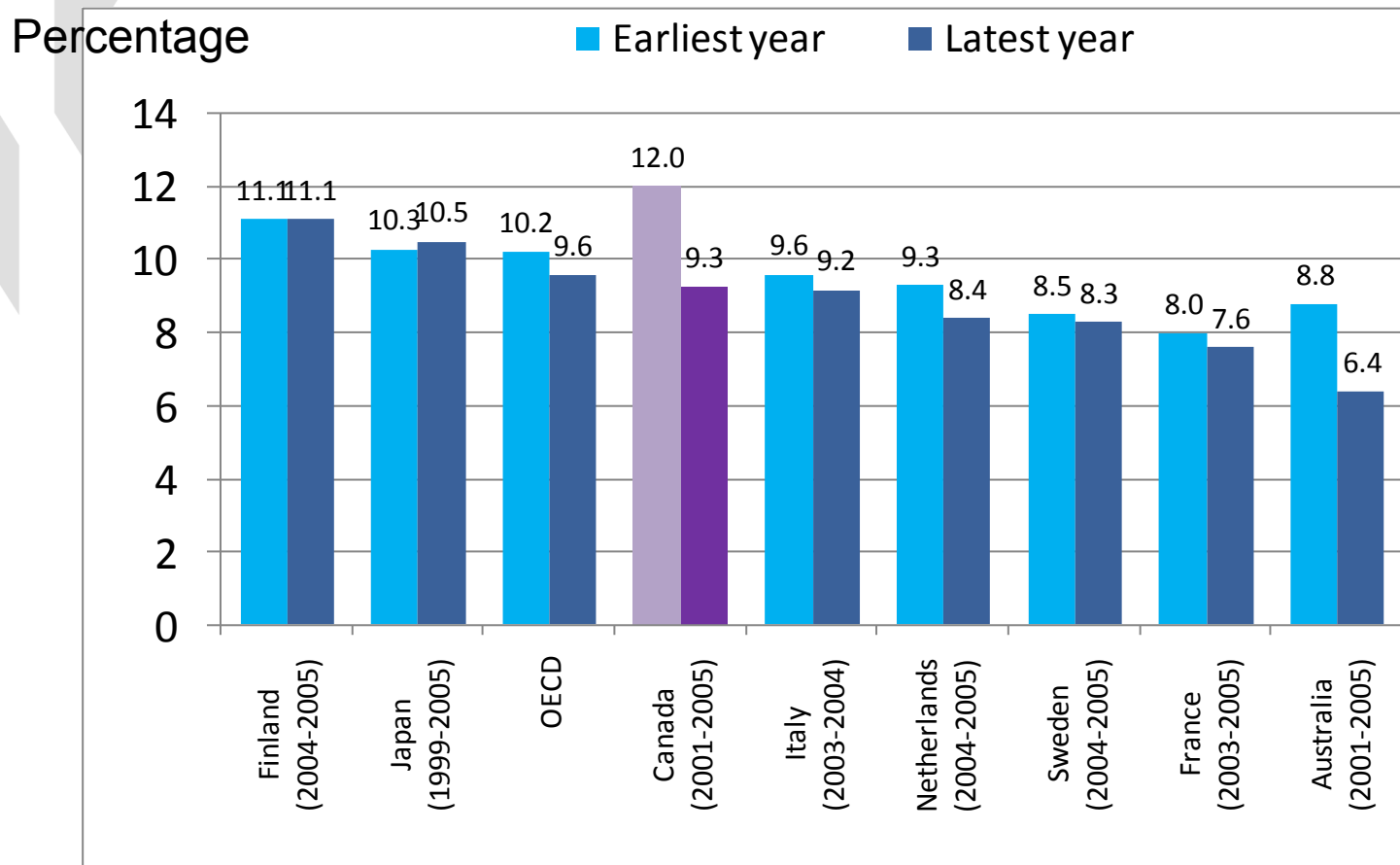
Source: *OECD Health Data 2007*

# In-hospital case-fatality rates within 30 days after admission for AMI



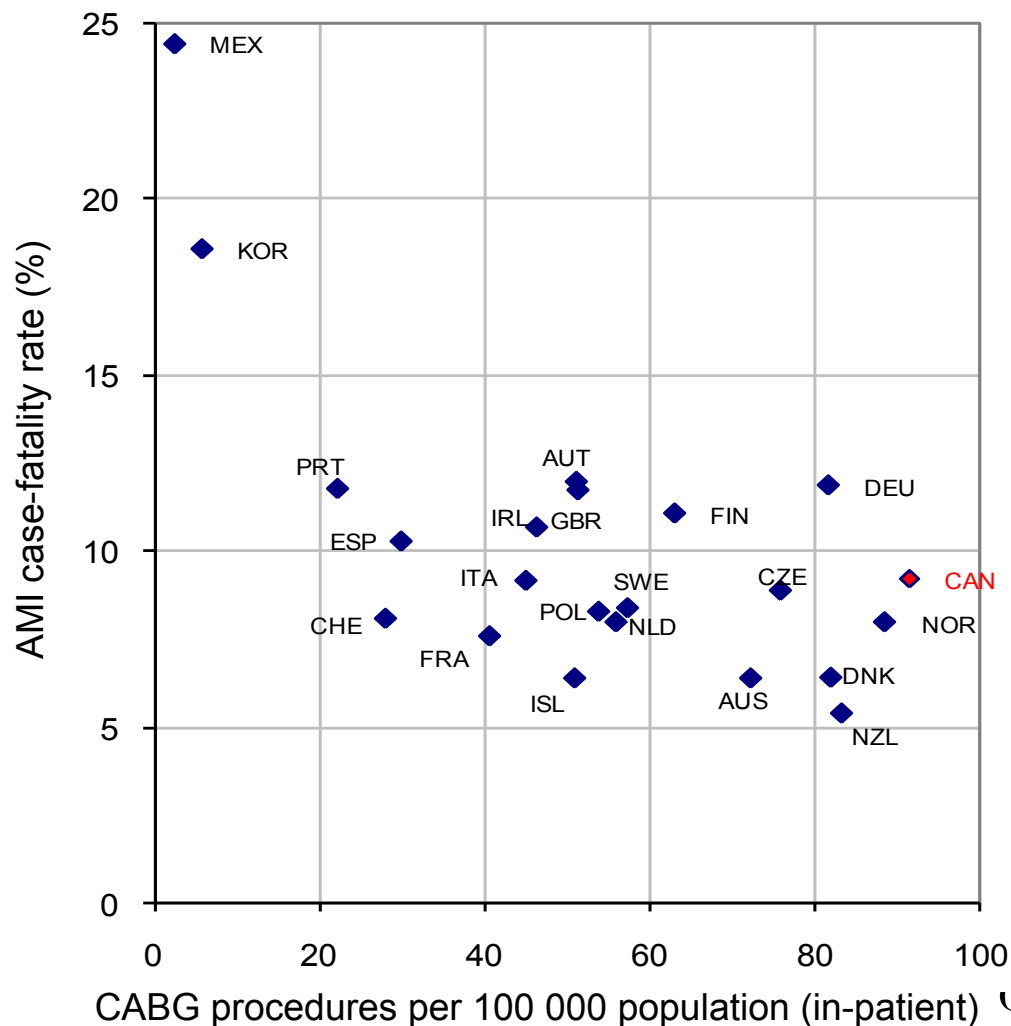
Source: *Health at a Glance 2007 – OECD indicators*

# Change in in-hospital case-fatality rates within 30 days after admission for AMI



Source: *Health at a Glance 2007 – OECD indicators*

# In-hospital case-fatality rates within 30 days after admission for AMI and CABG rates, 2005



Source: *Health at a Glance 2007 – OECD indicators*