



Faculté de médecine

Université de Montréal 

# BUILDING TOGETHER IN MEDICAL EDUCATION

## Patient partnership and engagement

COLLABORATION AND PATIENT PARTNERSHIP UNIT

Twitter : @patients\_udm

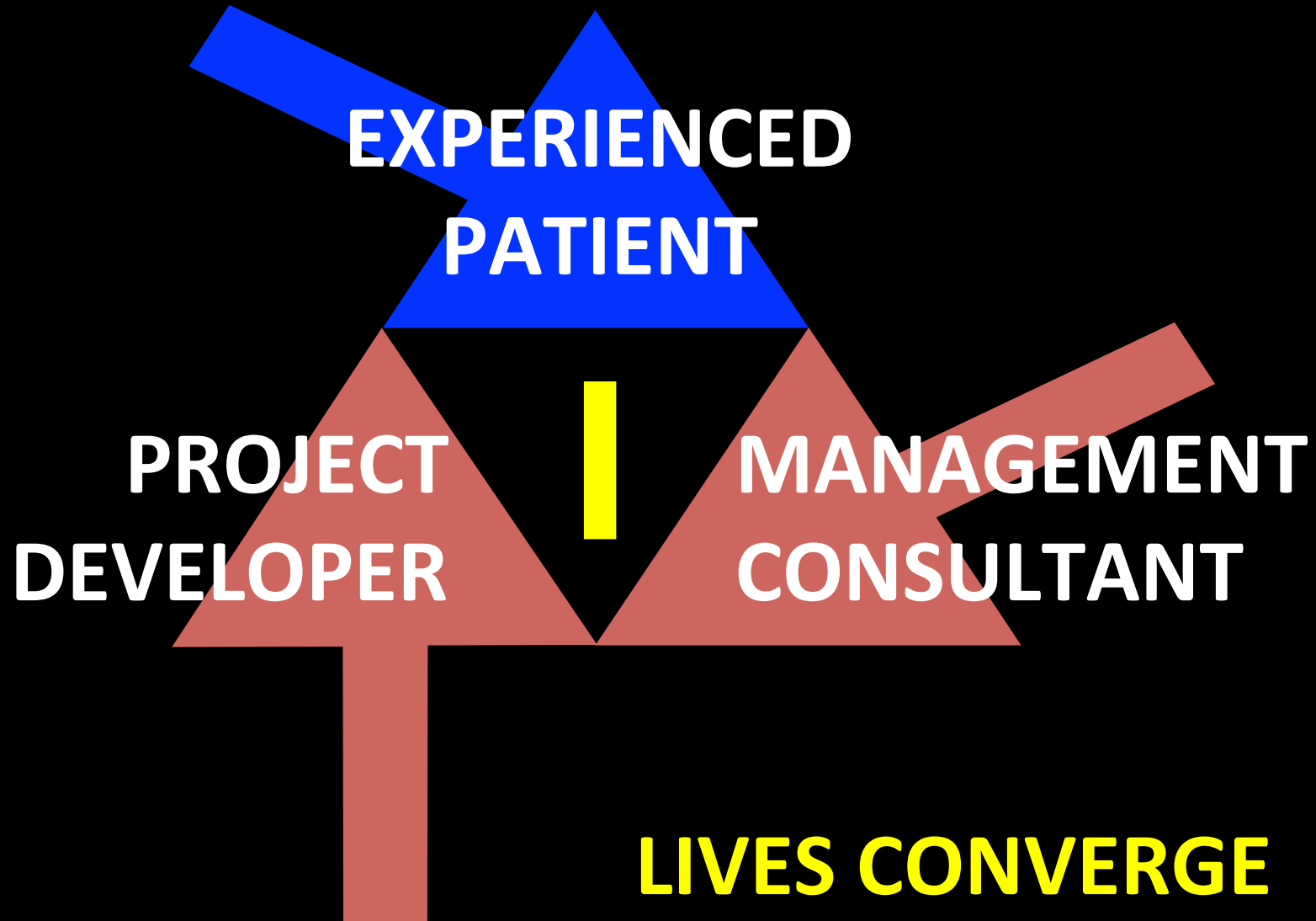
2014 conference of the MUHC-ISAI: Patient Engagement; October 3, 2014



© DCP 2014



# CROSSROAD



# A MAJOR TREND

British Medical Journal - 14 may 2013

*« Let the patient revolution  
begin »*



50% +

of the population in western  
countries suffer from at least one  
chronic disease

From acute care to chronic care

# 50 to 80%

of these patients don't  
properly respect their  
prescriptions

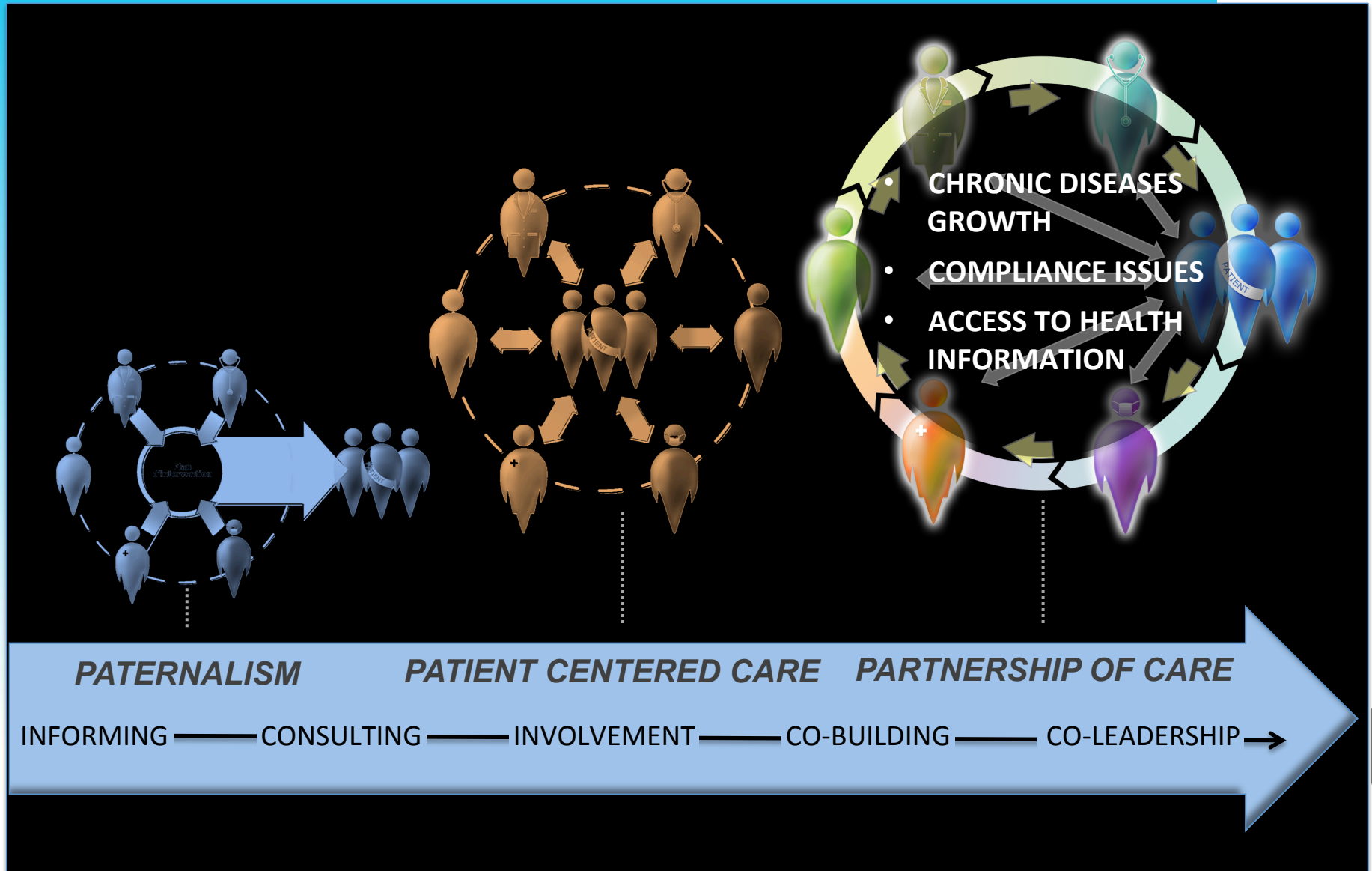
**Individuals are struggling**

80% +

of patients search online for  
health-related information

A need to understand, and to  
access medical information

# A MAJOR CHANGE FOR MEDICAL EDUCATION

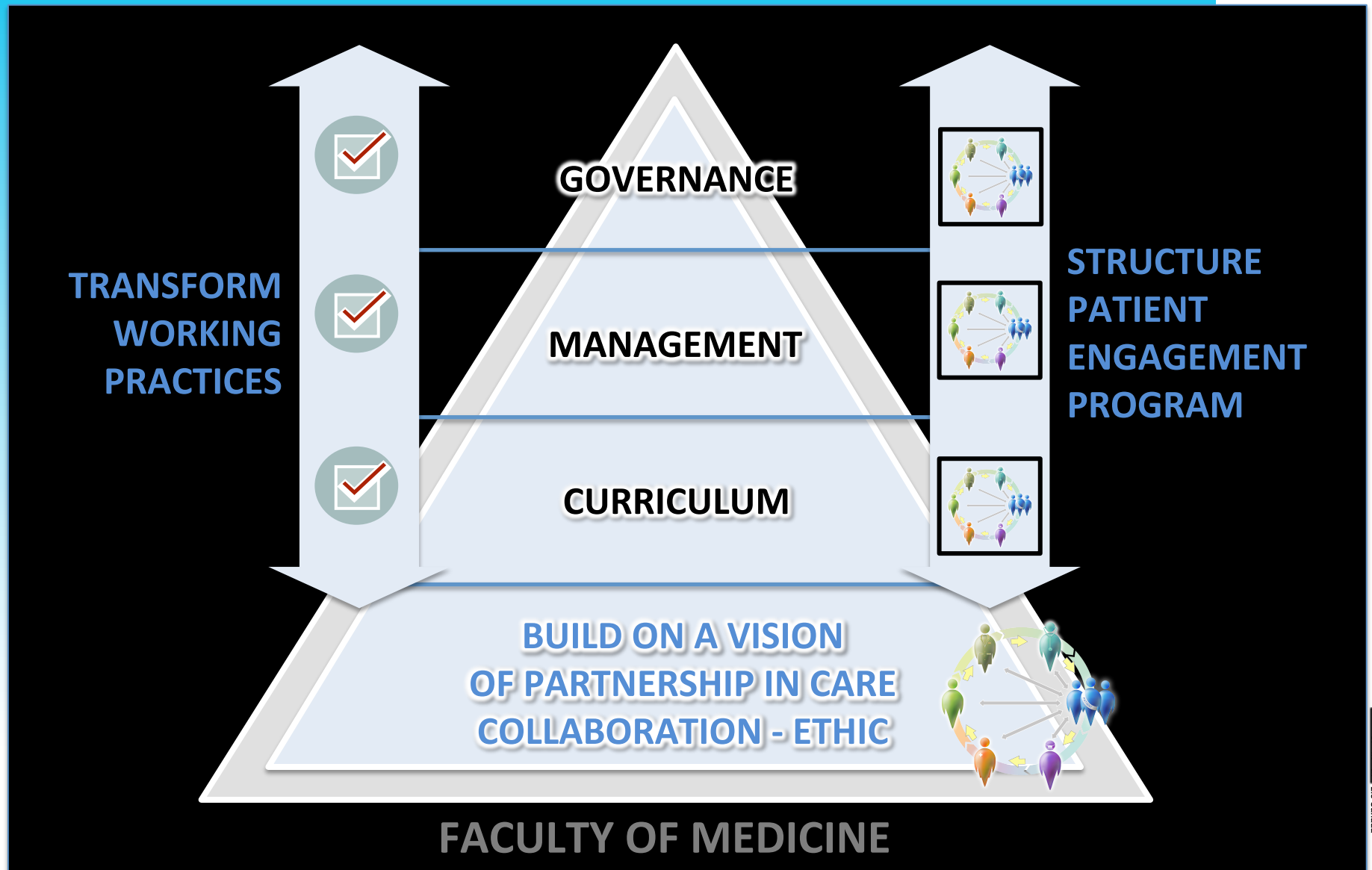


# COLLABORATION UNDER PRESSURE

- Loss of empathy
- Skepticism
- Communication issues
- New collaboration challenges



# PATIENTS ENGAGE IN A FACULTY OF MEDICINE : A MAJOR CULTURAL CHANGE



# KEY SUCCESS FACTORS OF PATIENT ENGAGEMENT IN A FACULTY OF MEDICINE

Faculté de médecine

Université de Montréal 

- STRONG, VISIBLE AND SUSTAINABLE LEADERSHIP
- CO-LEADING IN GOVERNANCE
- CO-BUILDING OF CONTENT
- CO-TRAINING OF STUDENTS
- SELECTION AND TRAINING OF PATIENTS TO BECOME CONFIDENT AND COMPETENT TEACHERS

# PATIENT PARTNERSHIP CHALLENGES FOR MEDICAL EDUCATION

Faculté de médecine

Université   
de Montréal

## FOR MD AND POST-GRADUATE PROGRAMS

1. DEVELOP STUDENT'S CAPACITIES TO MANAGE GROWING HUMAN COMPLEXITY, FACE CHALLENGING SOCIETAL ISSUES AND REINFORCE PARTNERSHIP WITH THEIR PATIENTS

2. REINFORCE LONGITUDINAL COMPETENCY-BASED LEARNING :  
COLLABORATION, COMMUNICATION, CLINICAL ETHICS,  
PROFESSIONALISM, HEALTH PROMOTION, ...

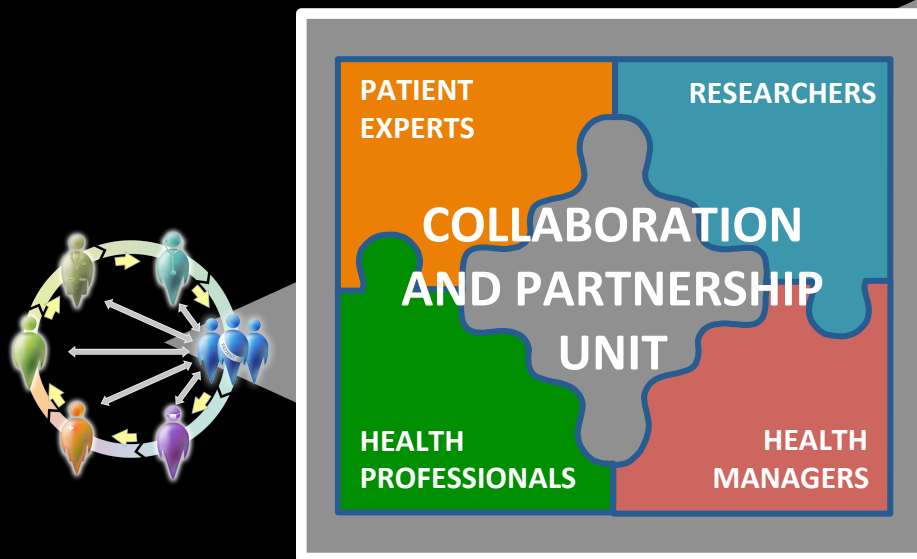
3. INVOLVE PATIENTS TO TRAIN STUDENTS ON THOSE  
COMPETENCIES (INCLUDING THEIR DESIGN)

# COLLABORATION AND PATIENT PARTNERSHIP UNIT

Faculté de médecine

Université de Montréal 

## CO-LEADERSHIP



**DEDICATED  
TO CO-CONSTRUCTION  
AND CREATION FROM  
EXPERIENCES**



### **PARTNERING IN HEALTH EDUCATION** *+120 patients-as-trainers*

- PROGRAMS TRANSFORMATION
- STUDENTS TRAINING
- STUDENTS MENTORING



### **PARTNERING IN CARE** *+75 patients-as-advisors*

- HEALTH CARE QUALITY IMPROVMENT
- HEALTH GOVERNANCE
- PUBLIC POLICY ENHANCEMENT



### **PARTNERING IN RESEARCH** *+5 patients co-chercheurs*

- RESEARCH RELEVANCE
- RESEARCH GOVERNANCE
- RESEARCH TRANSLATION